

PRINCE WILLIAM COUNTY Zoning Districts

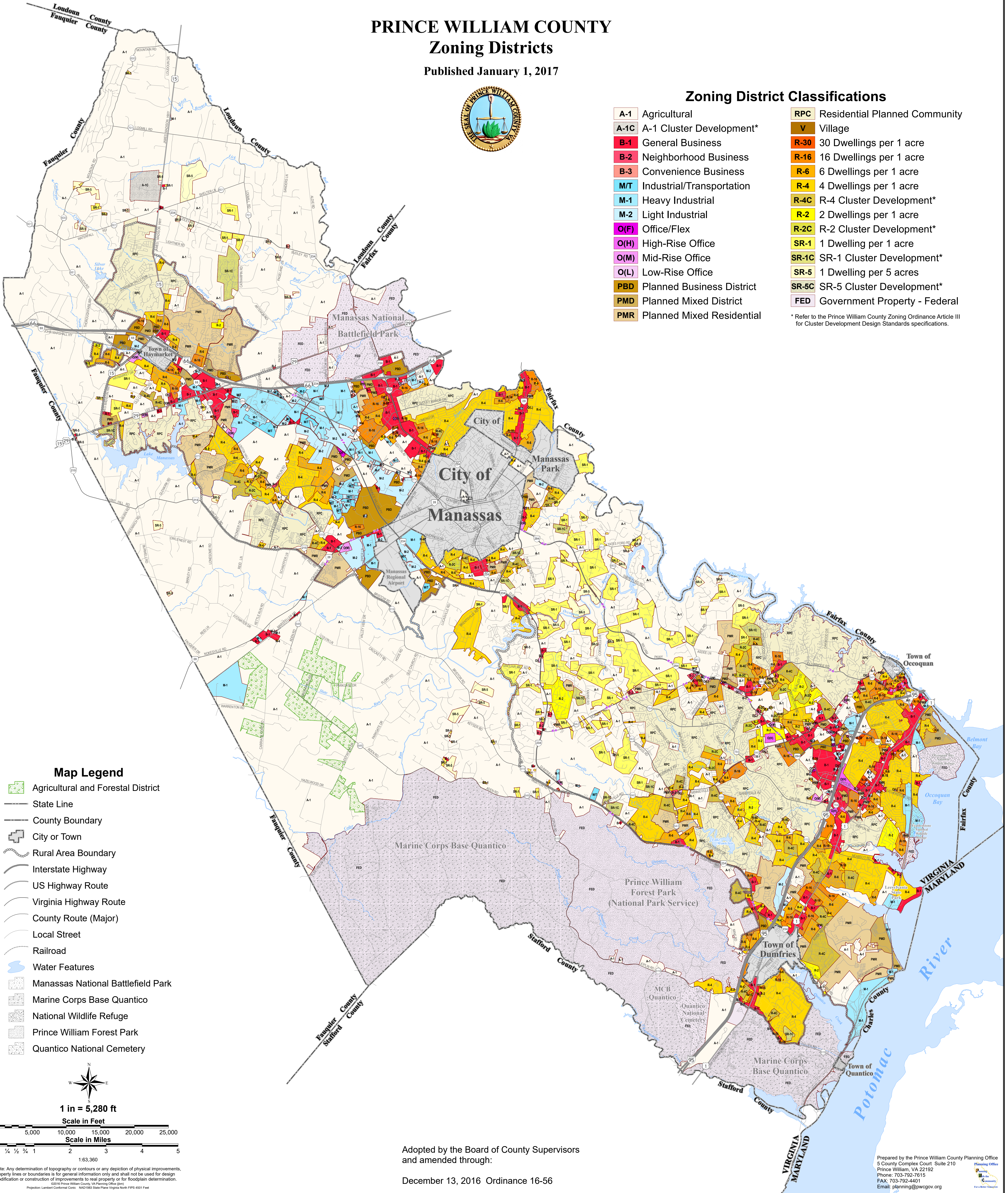
Published January 1, 2017



Zoning District Classifications

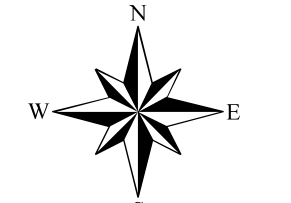
A-1	Agricultural	RPC	Residential Planned Community
A-1C	A-1 Cluster Development*	V	Village
B-1	General Business	R-30	30 Dwellings per 1 acre
B-2	Neighborhood Business	R-16	16 Dwellings per 1 acre
B-3	Convenience Business	R-6	6 Dwellings per 1 acre
M/T	Industrial/Transportation	R-4	4 Dwellings per 1 acre
M-1	Heavy Industrial	R-4C	R-4 Cluster Development*
M-2	Light Industrial	R-2	2 Dwellings per 1 acre
O(F)	Office/Flex	R-2C	R-2 Cluster Development*
O(H)	High-Rise Office	SR-1	1 Dwelling per 1 acre
O(M)	Mid-Rise Office	SR-1C	SR-1 Cluster Development*
O(L)	Low-Rise Office	SR-5	1 Dwelling per 5 acres
PBD	Planned Business District	SR-5C	SR-5 Cluster Development*
PMD	Planned Mixed District	FED	Government Property - Federal
PMR	Planned Mixed Residential		

* Refer to the Prince William County Zoning Ordinance Article III for Cluster Development Design Standards specifications.



Map Legend

- Agricultural and Forestal District
- State Line
- County Boundary
- City or Town
- Rural Area Boundary
- Interstate Highway
- US Highway Route
- Virginia Highway Route
- County Route (Major)
- Local Street
- Railroad
- Water Features
- Manassas National Battlefield Park
- Marine Corps Base Quantico
- National Wildlife Refuge
- Prince William Forest Park
- Quantico National Cemetery



1 in = 5,280 ft

Scale in Feet

0 5,000 10,000 15,000 20,000 25,000

Scale in Miles

0 1/4 1/2 1 2 3 4 5

1:63,360

Note: Any determination of topography or contours or any depiction of physical improvements, property lines or boundaries is for general information only and shall not be used for design modification or construction of improvements to real property or for floodplain determination.

©2016 Prince William County, VA Planning Office (gmi)

Projection: Lambert Conformal Conic; NAD83 State Plane Virginia North FIPS 4511 Feet

Adopted by the Board of County Supervisors
and amended through:

December 13, 2016 Ordinance 16-56

Prepared by the Prince William County Planning Office
5 County Complex Court, Suite 210
Prince William, VA 22192
Phone: 703-792-7615
FAX: 703-792-4401
Email: planning@pwgov.org

