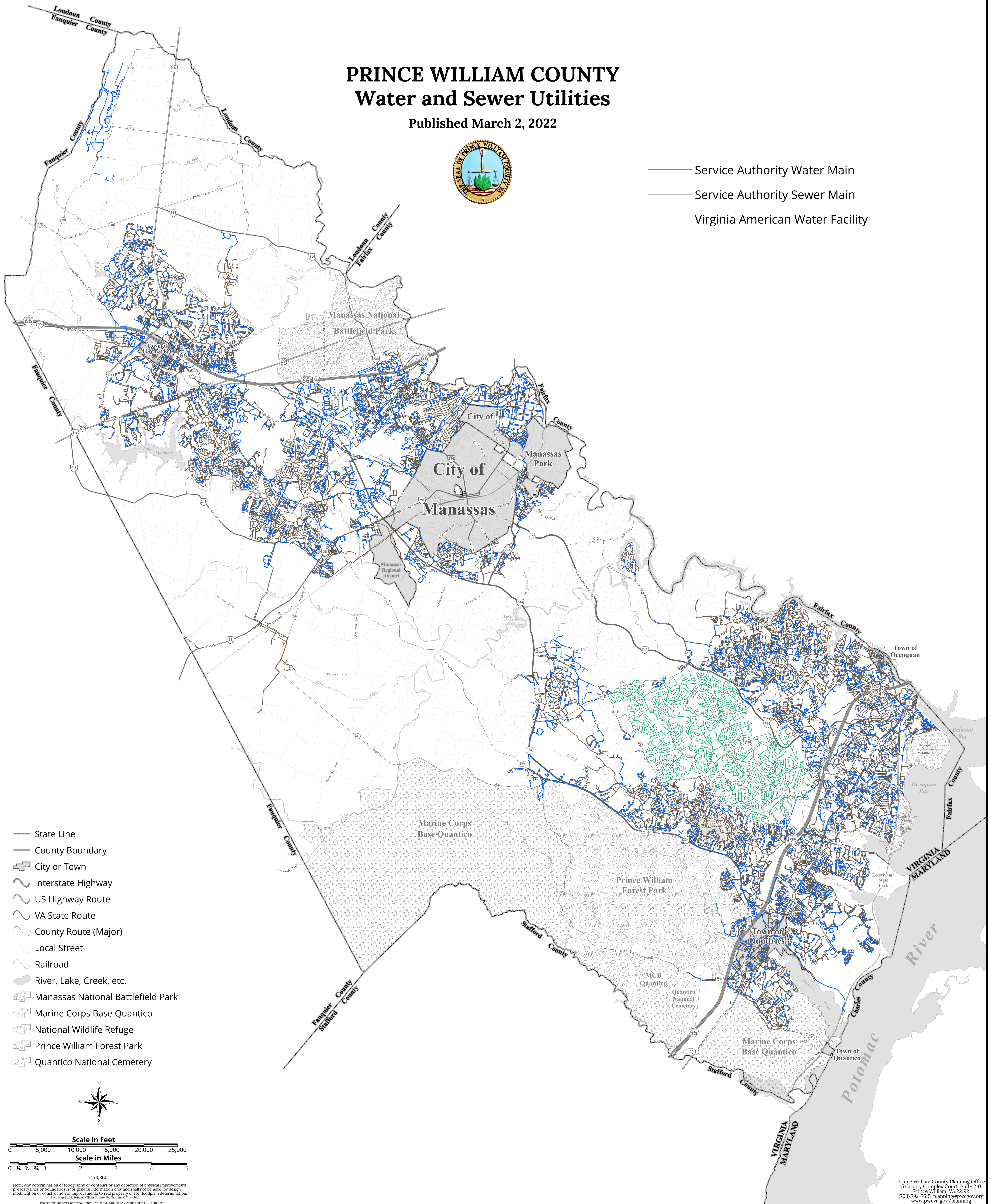


# PRINCE WILLIAM COUNTY Water and Sewer Utilities

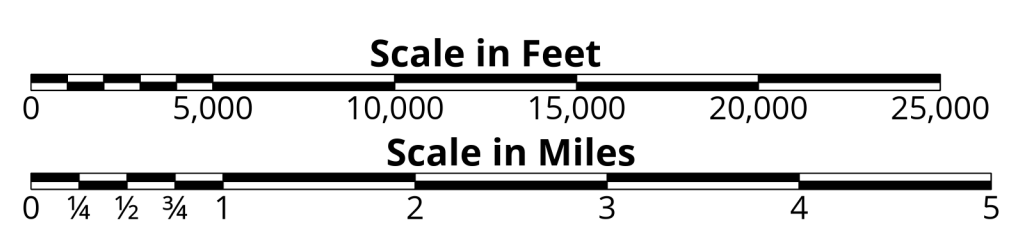
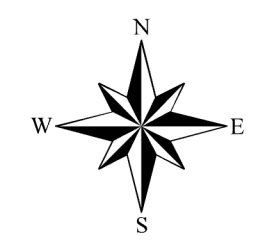
Published March 2, 2022



- Service Authority Water Main
- Service Authority Sewer Main
- Virginia American Water Facility



- State Line
- County Boundary
- + City or Town
- = Interstate Highway
- = US Highway Route
- = VA State Route
- = County Route (Major)
- = Local Street
- = Railroad
- = River, Lake, Creek, etc.
- + Manassas National Battlefield Park
- + Marine Corps Base Quantico
- + National Wildlife Refuge
- + Prince William Forest Park
- + Quantico National Cemetery



Note: Any determination of topography or contours or any depiction of physical improvements, property lines or boundaries is for general information only and shall not be used for design modification or construction of improvements to real property or for floodplain determination.  
Base Map ©2021 Prince William County, VA Planning Office (PWC)  
Projection: Lambert Conformal Conic - NAD83/83 State Plane Virginia North FIPS 4200 Feet