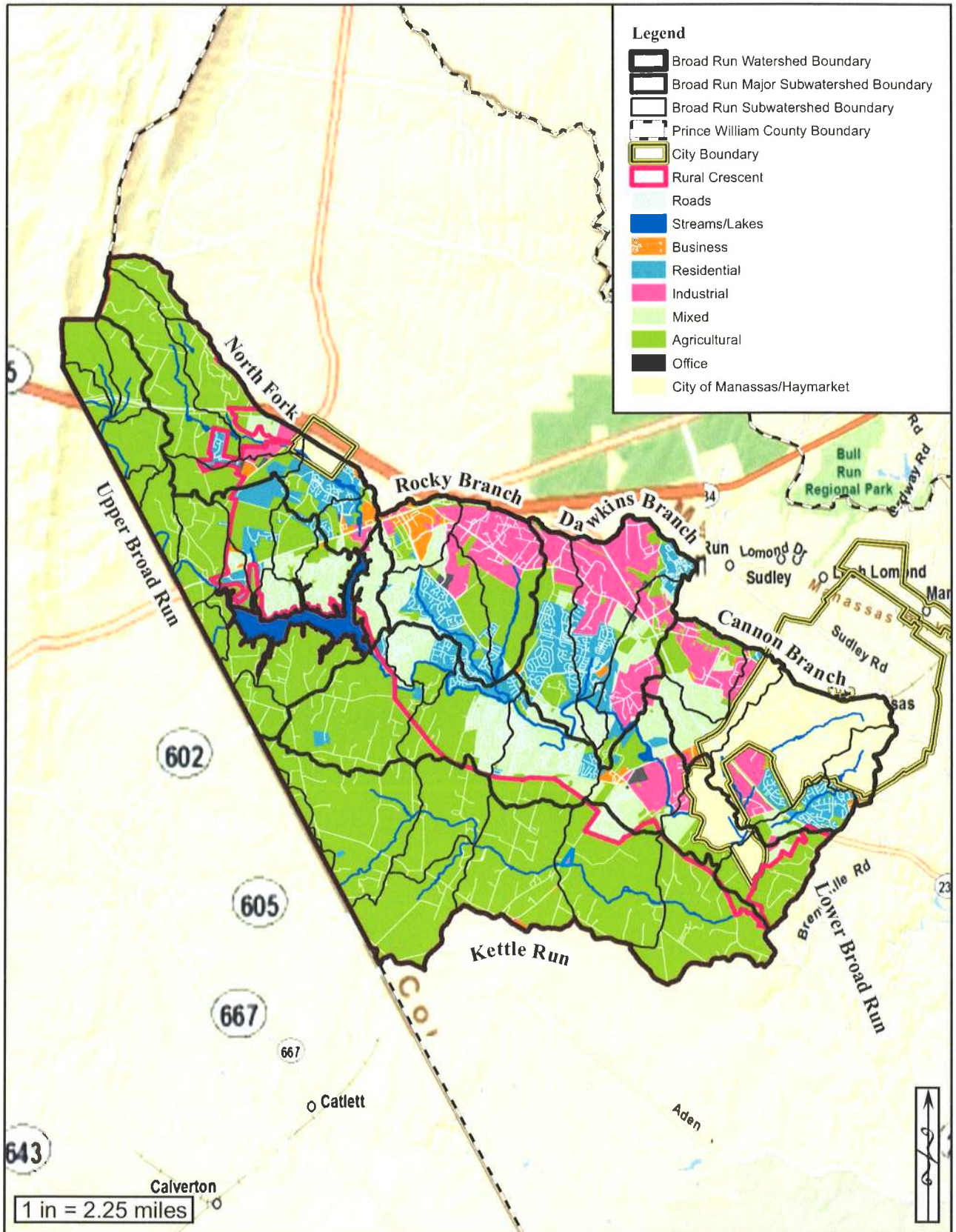




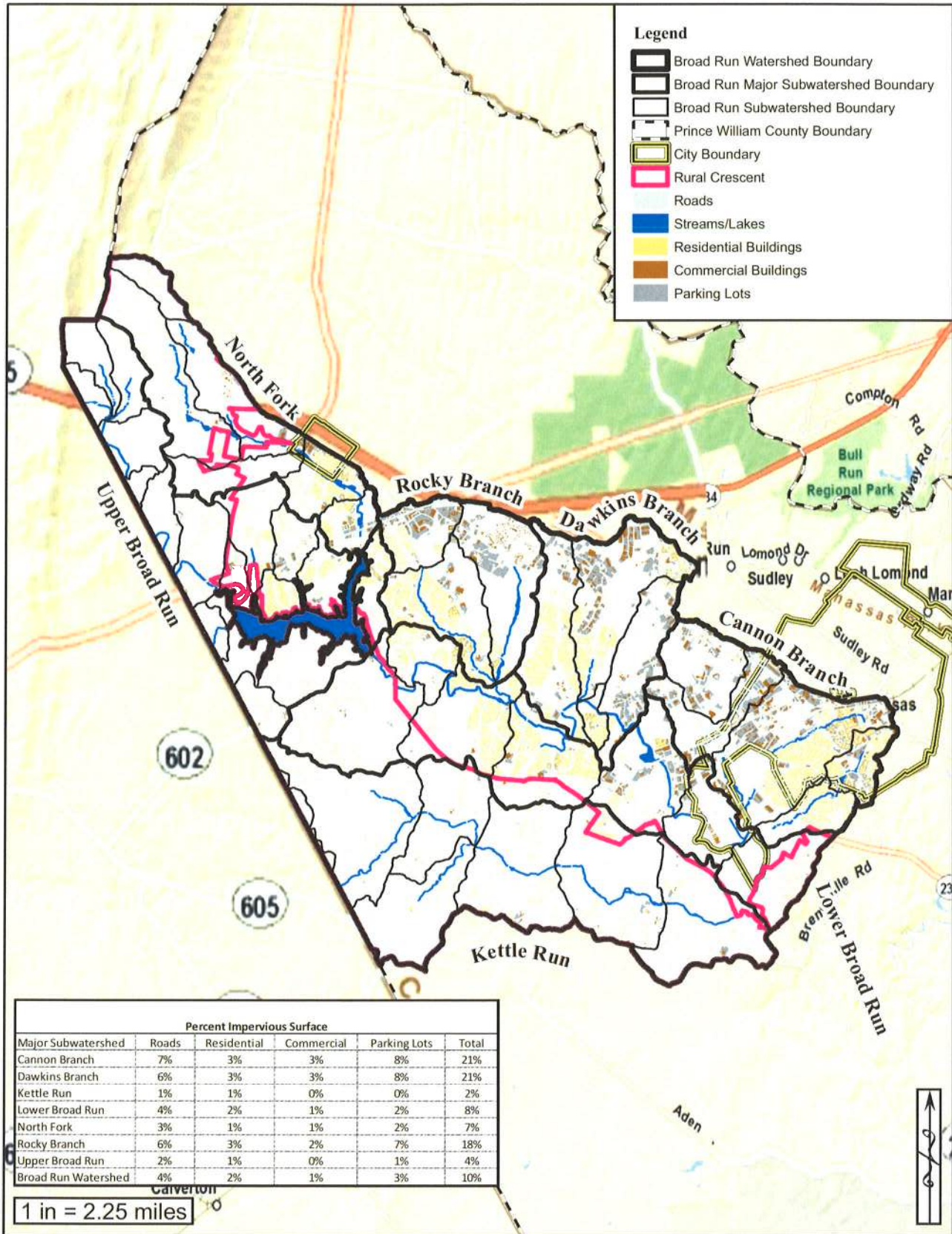
## **Appendix A**

### **Watershed Characterization**



 	<p>Source: Prince William County GIS, Esri World Street Map</p>	<p>Title: <b>Broad Run Watershed Zoning Map</b></p>	<p>Figure: <b>A-1</b></p>
---	---	---	-------------------------------





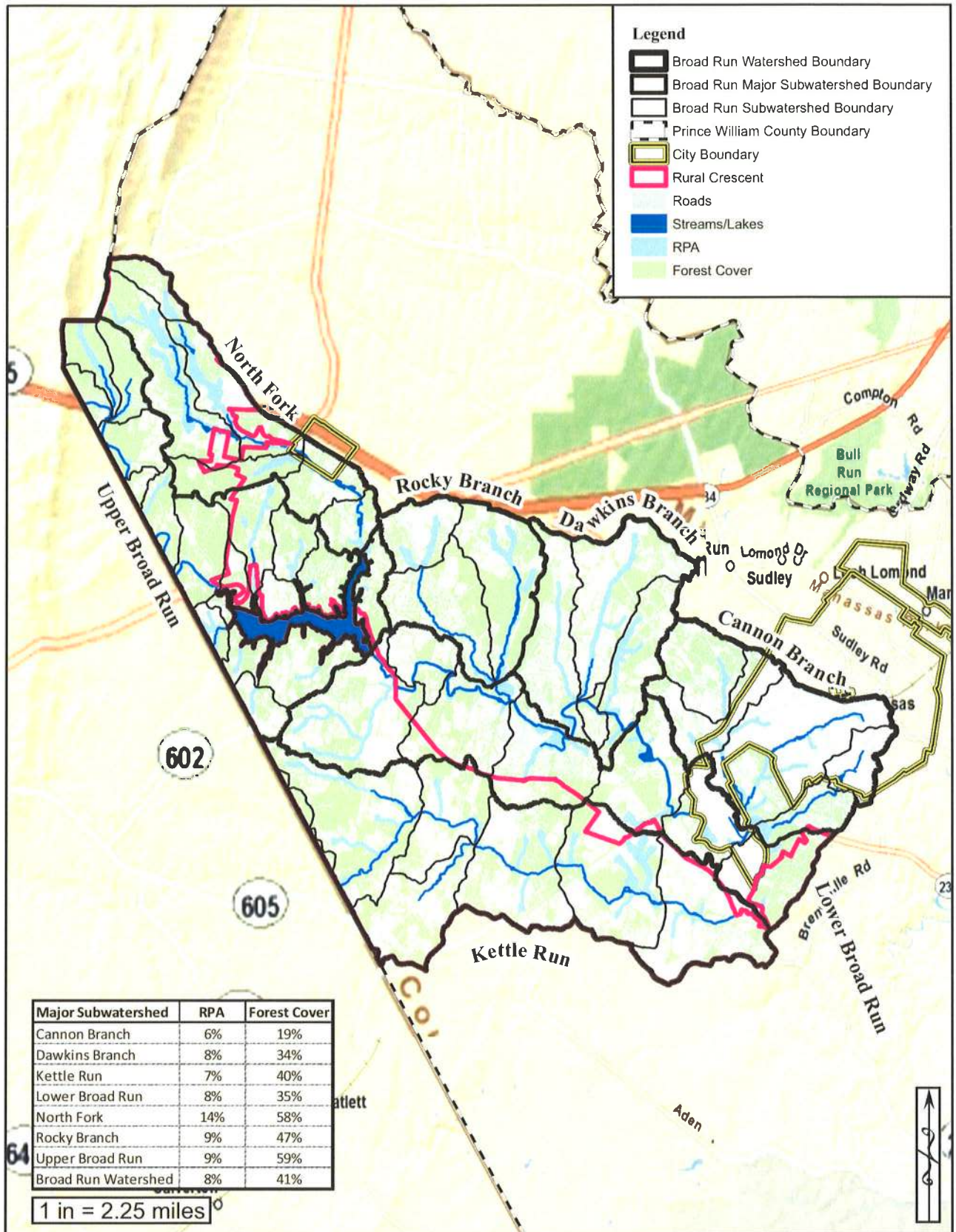
WR&A

Source:  
Prince William County  
GIS, Esri World Street  
Map

Title:  
**Broad Run Watershed  
Impervious Surface  
Map**

Figure:  
A-2





- Legend**
- Broad Run Watershed Boundary
  - Broad Run Major Subwatershed Boundary
  - Broad Run Subwatershed Boundary
  - Prince William County Boundary
  - City Boundary
  - Rural Crescent
  - Roads
  - Streams/Lakes
  - RPA
  - Forest Cover

Major Subwatershed	RPA	Forest Cover
Cannon Branch	6%	19%
Dawkins Branch	8%	34%
Kettle Run	7%	40%
Lower Broad Run	8%	35%
North Fork	14%	58%
Rocky Branch	9%	47%
Upper Broad Run	9%	59%
Broad Run Watershed	8%	41%

1 in = 2.25 miles

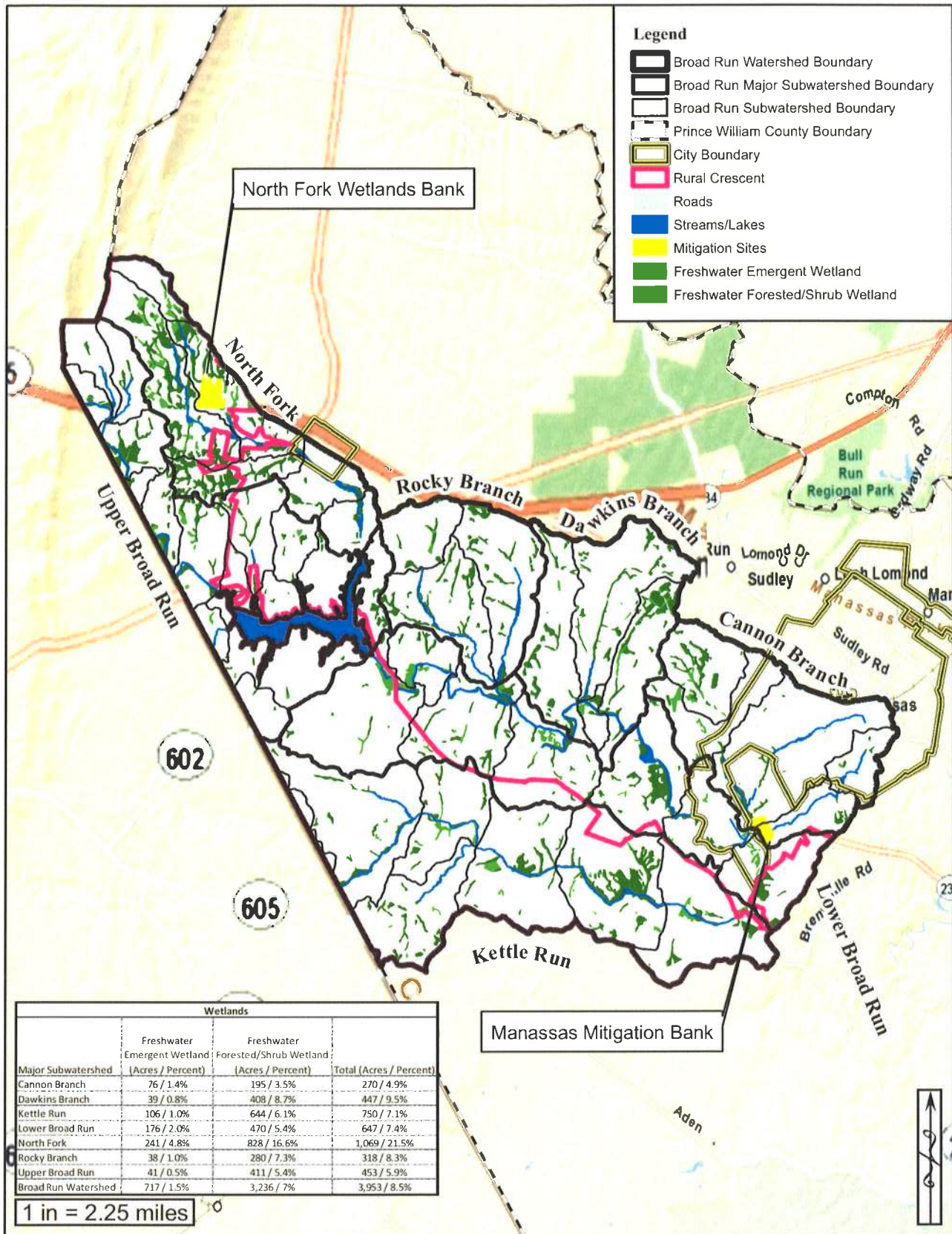


Source:  
 Prince William County  
 GIS, Esri World Street  
 Map

Title:  
**Broad Run Watershed  
 Forest Cover  
 Map**

Figure:  
**A-3**





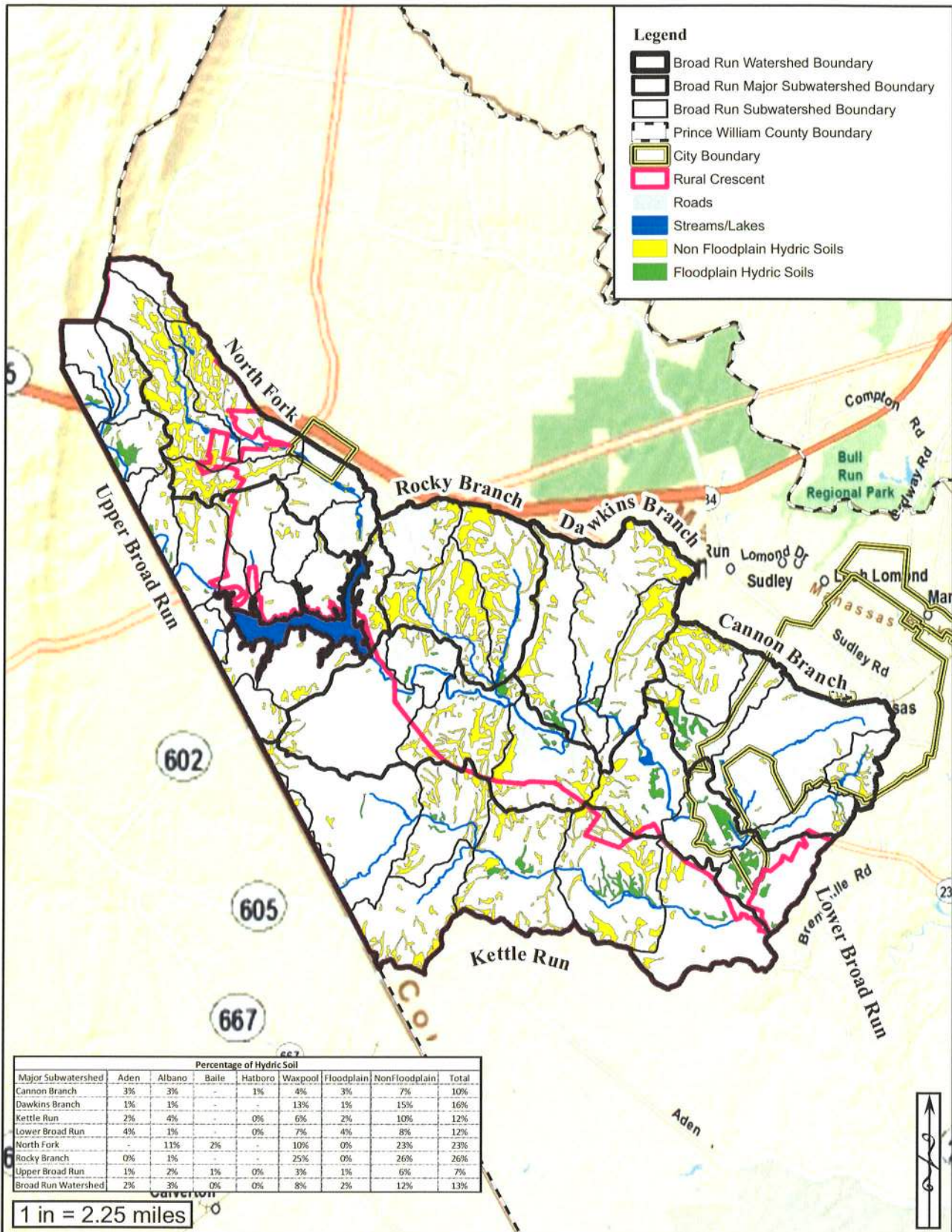
**WR&A**

Source:  
 Prince William County  
 GIS, UFWS (NWI),  
 Esri World Street Map

Title:  
**Broad Run Watershed  
 Wetlands  
 Map**



Figure:  
**A-4**



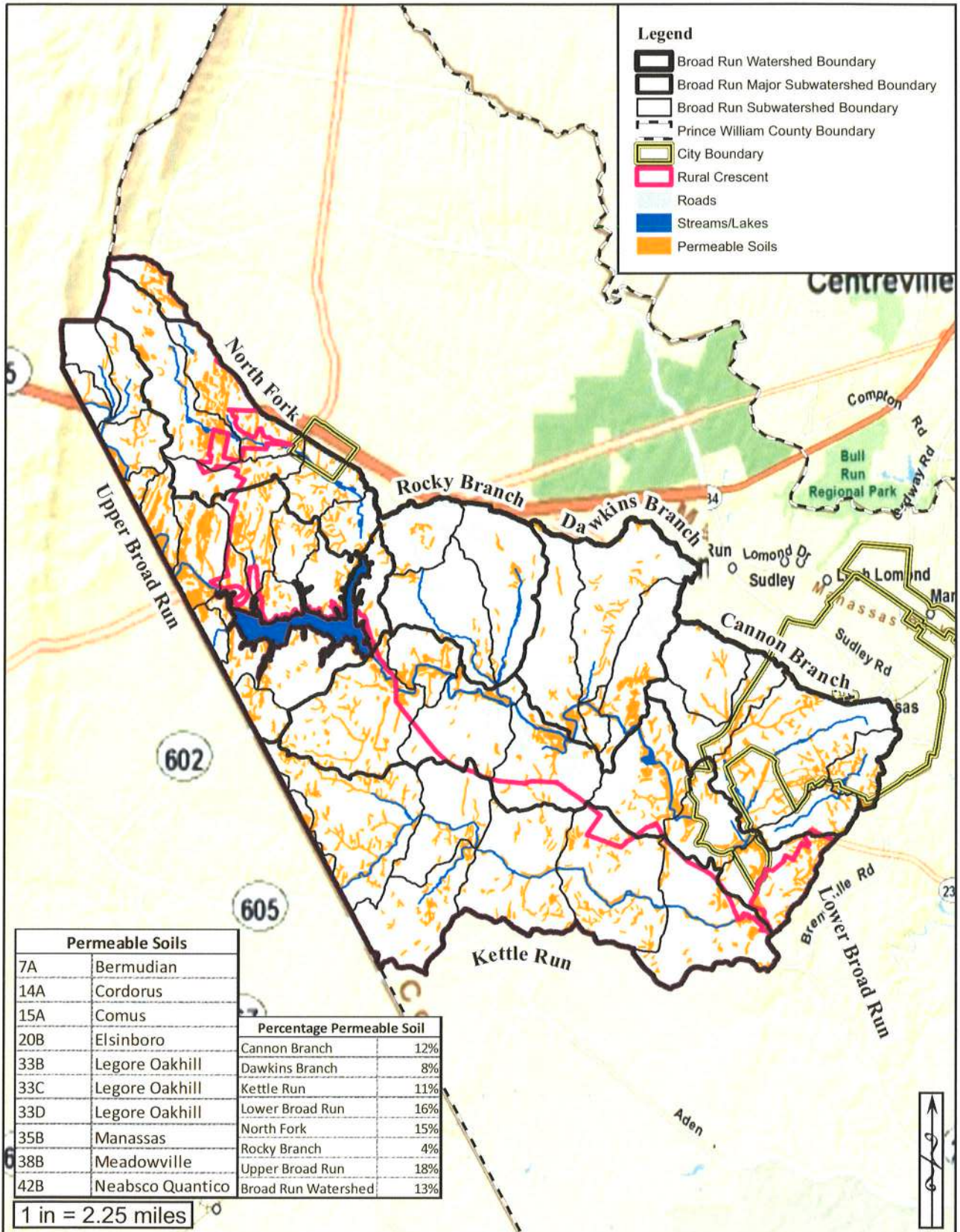


Major Subwatershed	Percentage of Hydric Soil							Total
	Aden	Albano	Baile	Hatboro	Waxpool	Floodplain	NonFloodplain	
Cannon Branch	3%	3%	-	1%	4%	3%	7%	10%
Dawkins Branch	1%	1%	-	-	13%	1%	15%	16%
Kettle Run	2%	4%	-	0%	6%	2%	10%	12%
Lower Broad Run	4%	1%	-	0%	7%	4%	8%	12%
North Fork	-	11%	2%	-	10%	0%	23%	23%
Rocky Branch	0%	1%	-	-	25%	0%	26%	26%
Upper Broad Run	1%	2%	1%	0%	3%	1%	6%	7%
Broad Run Watershed	2%	3%	0%	0%	8%	2%	12%	13%

1 in = 2.25 miles

 	<p>Source: Prince William County GIS, NRCS, Esri World Street Map</p>	<p>Title: <b>Broad Run Watershed Hydric Soils Map</b></p>	<p>Figure: <b>A-5</b></p>
---	---	---	-------------------------------





- Legend**
- Broad Run Watershed Boundary
  - Broad Run Major Subwatershed Boundary
  - Broad Run Subwatershed Boundary
  - Prince William County Boundary
  - City Boundary
  - Rural Crescent
  - Roads
  - Streams/Lakes
  - Permeable Soils

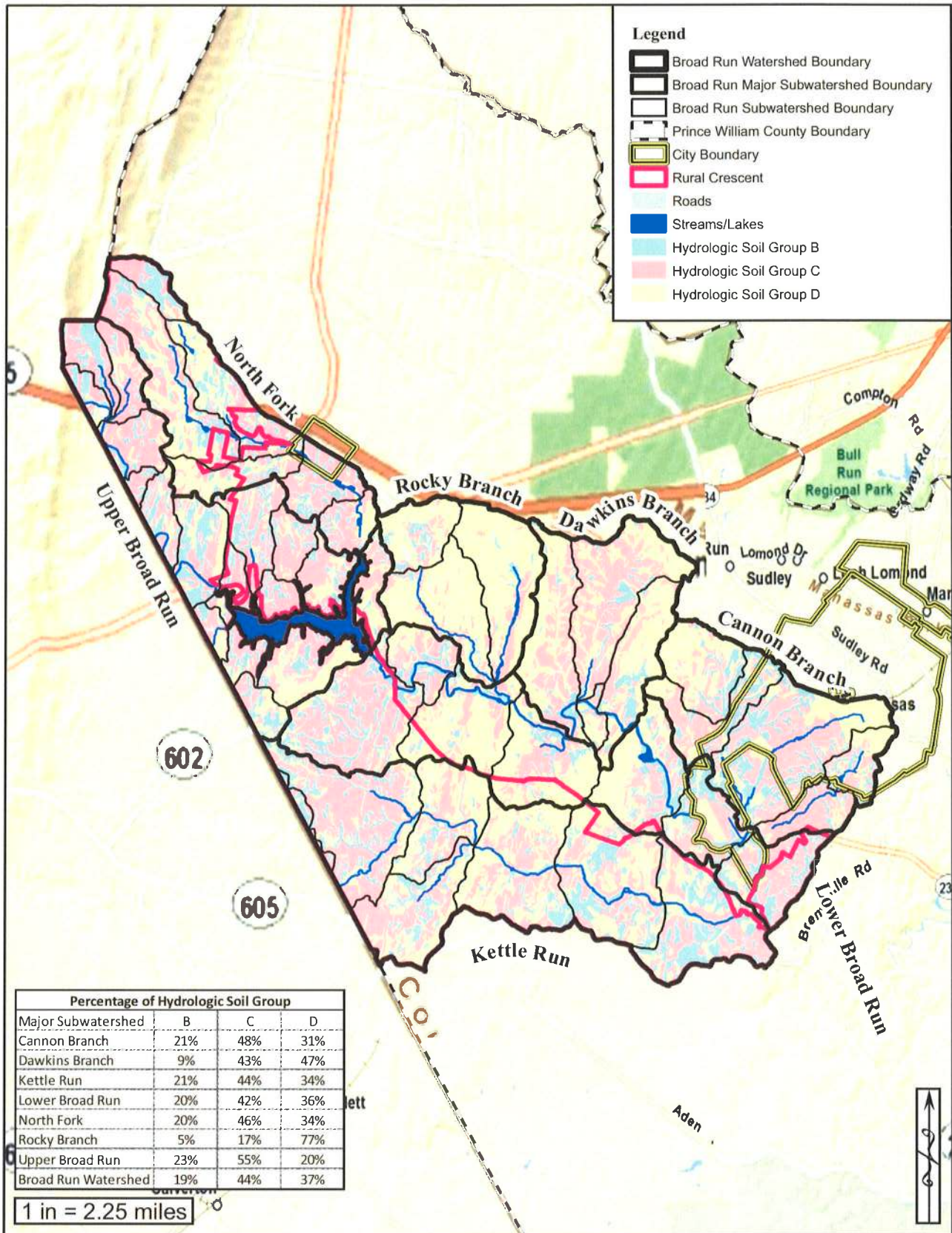
Permeable Soils	
7A	Bermudian
14A	Cordorus
15A	Comus
20B	Elsinboro
33B	Legore Oakhill
33C	Legore Oakhill
33D	Legore Oakhill
35B	Manassas
38B	Meadowville
42B	Neabsco Quantico

Percentage Permeable Soil	
Cannon Branch	12%
Dawkins Branch	8%
Kettle Run	11%
Lower Broad Run	16%
North Fork	15%
Rocky Branch	4%
Upper Broad Run	18%
Broad Run Watershed	13%

1 in = 2.25 miles





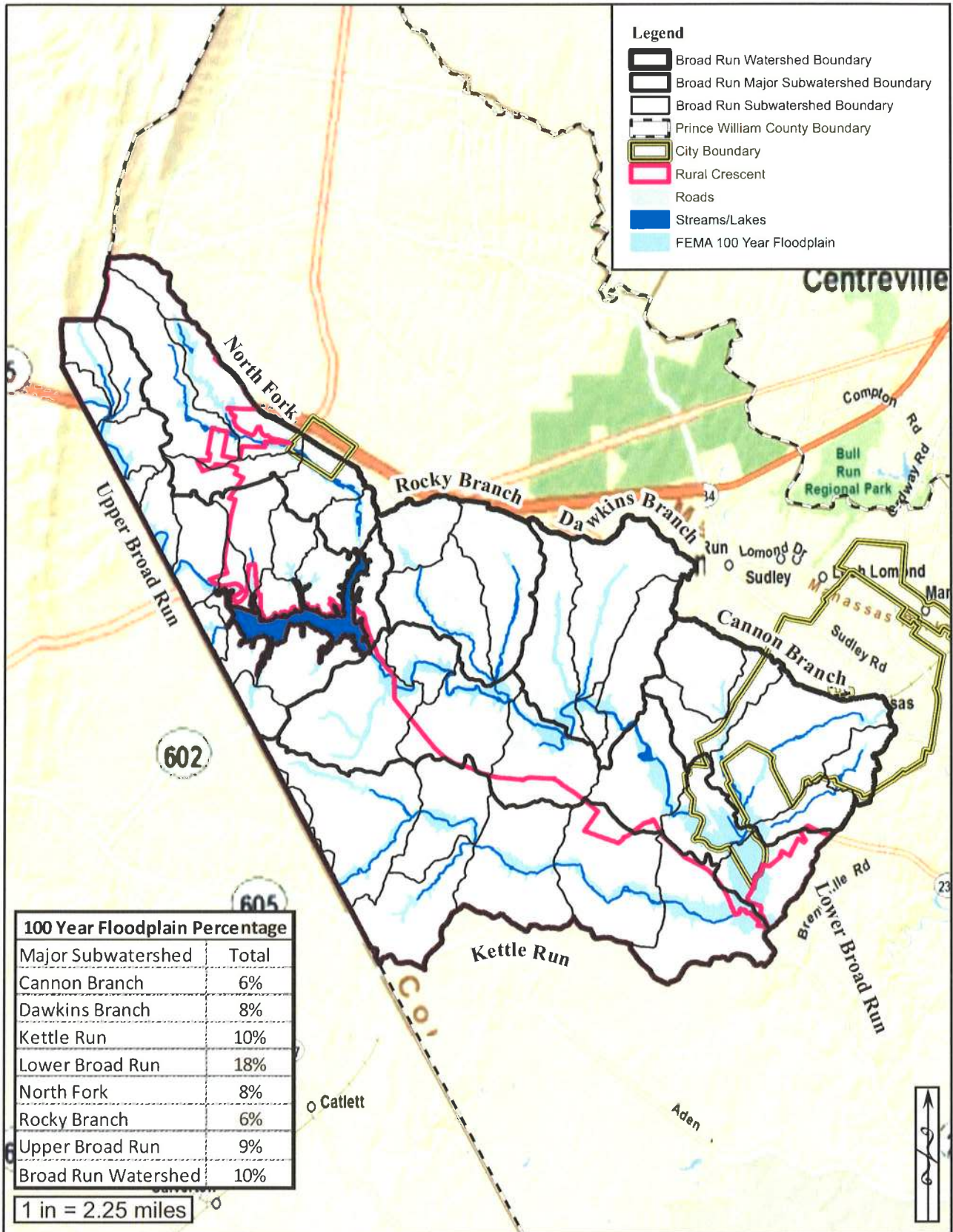
**WR&A**

Source:  
Prince William County  
GIS, Esri World Street  
Map

Title:  
**Broad Run Watershed  
Hydrologic Soils Group  
Map**



Figure:  
**A-7**



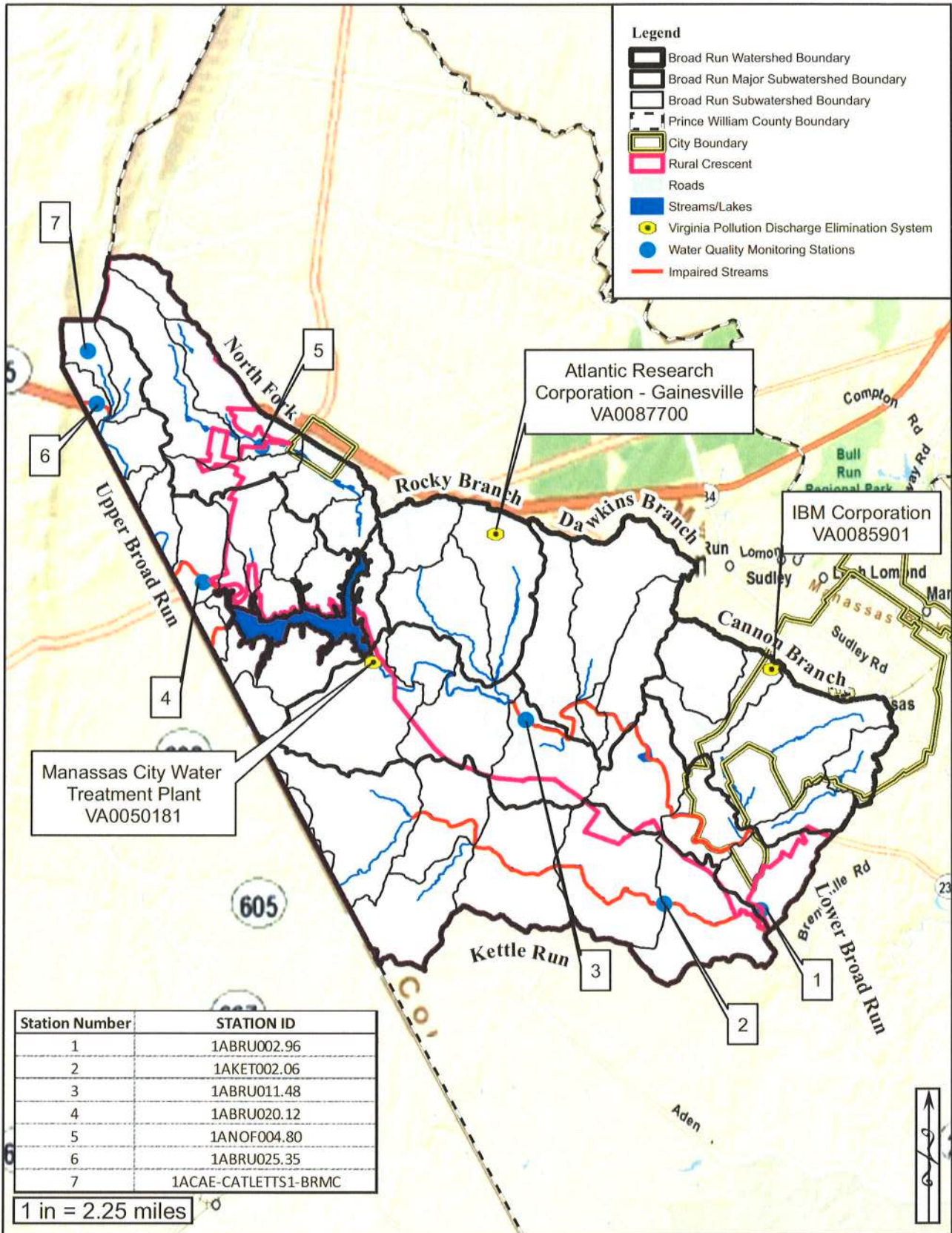


100 Year Floodplain Percentage	
Major Subwatershed	Total
Cannon Branch	6%
Dawkins Branch	8%
Kettle Run	10%
Lower Broad Run	18%
North Fork	8%
Rocky Branch	6%
Upper Broad Run	9%
Broad Run Watershed	10%

1 in = 2.25 miles

 	<p>Source: Prince William County GIS, Esri World Street Map</p>	<p>Title: <b>Broad Run Watershed Floodplain Map</b></p>	<p>Figure: <b>A-8</b></p>
---	---	---	-------------------------------





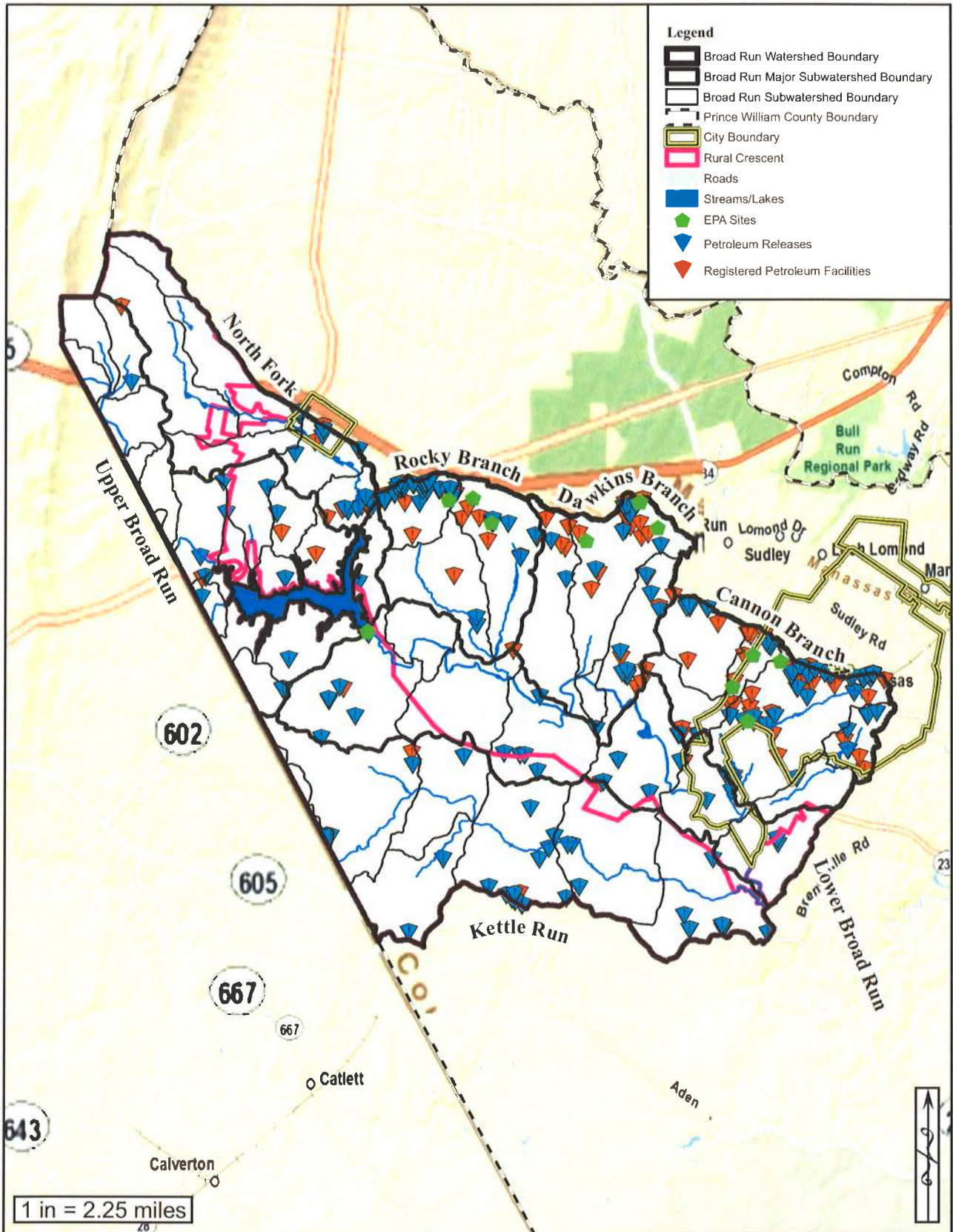
**WR&A**

Source:  
Prince William County  
GIS, DEQ, Esri,  
World Street Map

Title:  
**Broad Run Watershed  
Water Quality and  
Pollution Discharge Map**

Figure:  
**A-9**





Source:  
 Prince William County  
 GIS, Esri World Street  
 Map

Title:  
**Broad Run Watershed  
 Hazardous Material  
 Map**

Figure:  
**A-10**