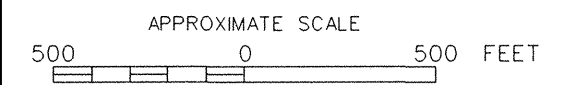


Prince William County
Incorporated Areas
510119

JOINS PANEL 0219



NATIONAL FLOOD INSURANCE PROGRAM

FIRM
FLOOD INSURANCE RATE MAP
**PRINCE WILLIAM COUNTY,
VIRGINIA
AND INCORPORATED AREAS**

PANEL 217 OF 330
(SEE MAP INDEX FOR PANELS NOT PRINTED)

CONTAINS:

COMMUNITY	NUMBER	PANEL	SUFFIX
OCCOQUAN, TOWN OF	51024	0217	D
UNINCORPORATED AREAS	51019	0217	D

Notice to User: The MAP NUMBER shown below should be used when placing map orders; the COMMUNITY NUMBER shown above should be used on insurance applications for the subject community.

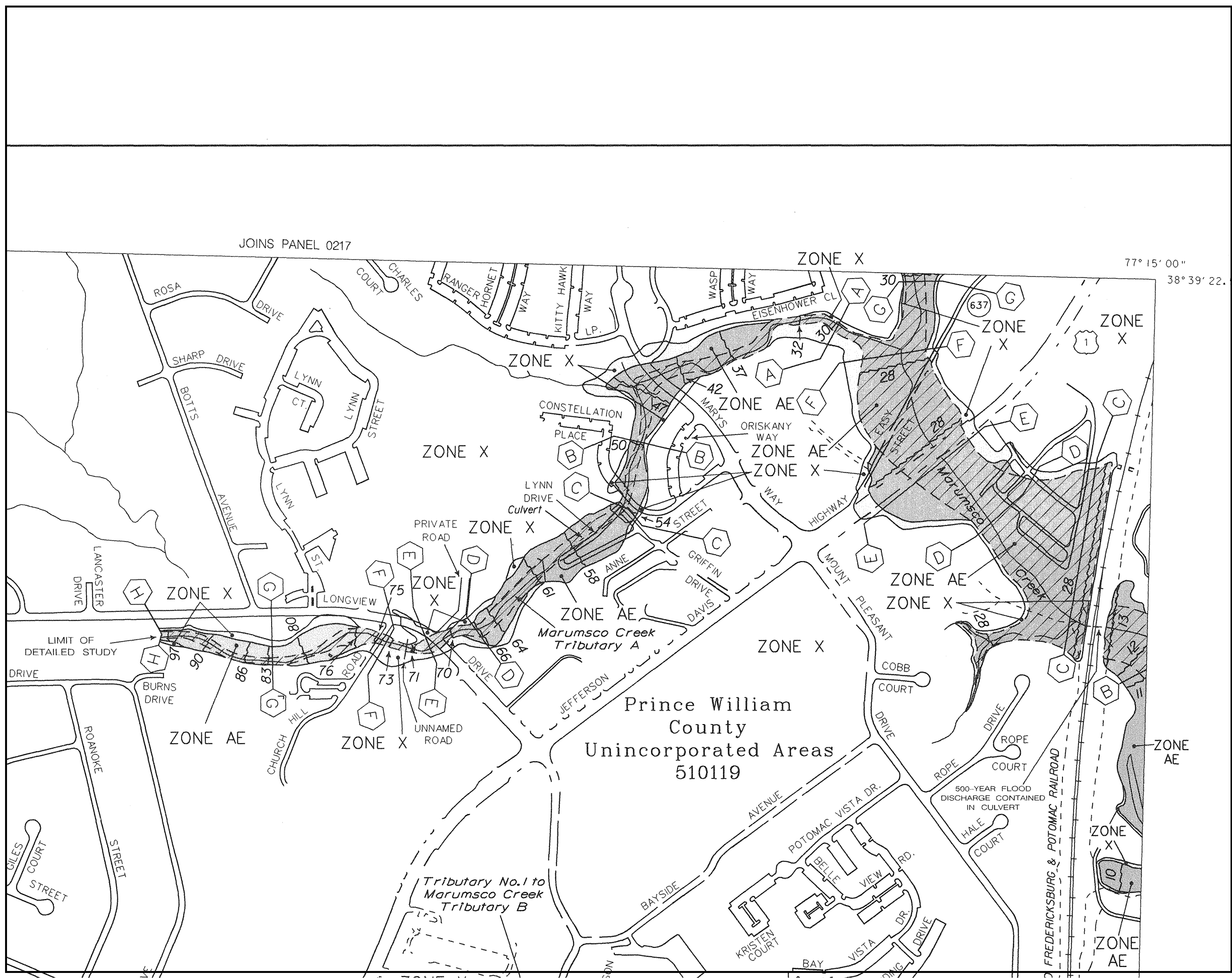
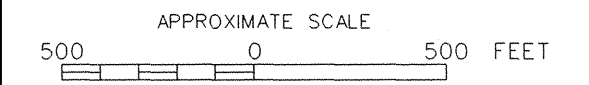
MAP NUMBER
51153C0217 D

EFFECTIVE DATE:
JANUARY 5, 1995



Federal Emergency Management Agency

This is an official copy of a portion of the above referenced flood map. It was extracted using F-MIT On-Line. This map does not reflect changes or amendments which may have been made subsequent to the date on the title block. For the latest product information about National Flood Insurance Program flood maps check the FEMA Flood Map Store at www.msc.fema.gov



NATIONAL FLOOD INSURANCE PROGRAM

FIRM FLOOD INSURANCE RATE MAP PRINCE WILLIAM COUNTY, VIRGINIA AND INCORPORATED AREAS

PANEL 219 OF 330
(SEE MAP INDEX FOR PANELS NOT PRINTED)

CONTAINS:

COMMUNITY	NUMBER	PANEL	SUFFIX
UNINCORPORATED AREAS	51019	0219	D

Notice to User: The MAP NUMBER shown below should be used when placing map orders; the COMMUNITY NUMBER shown above should be used on insurance applications for the subject community.

MAP NUMBER
51153C0219 D

EFFECTIVE DATE:
JANUARY 5, 1995



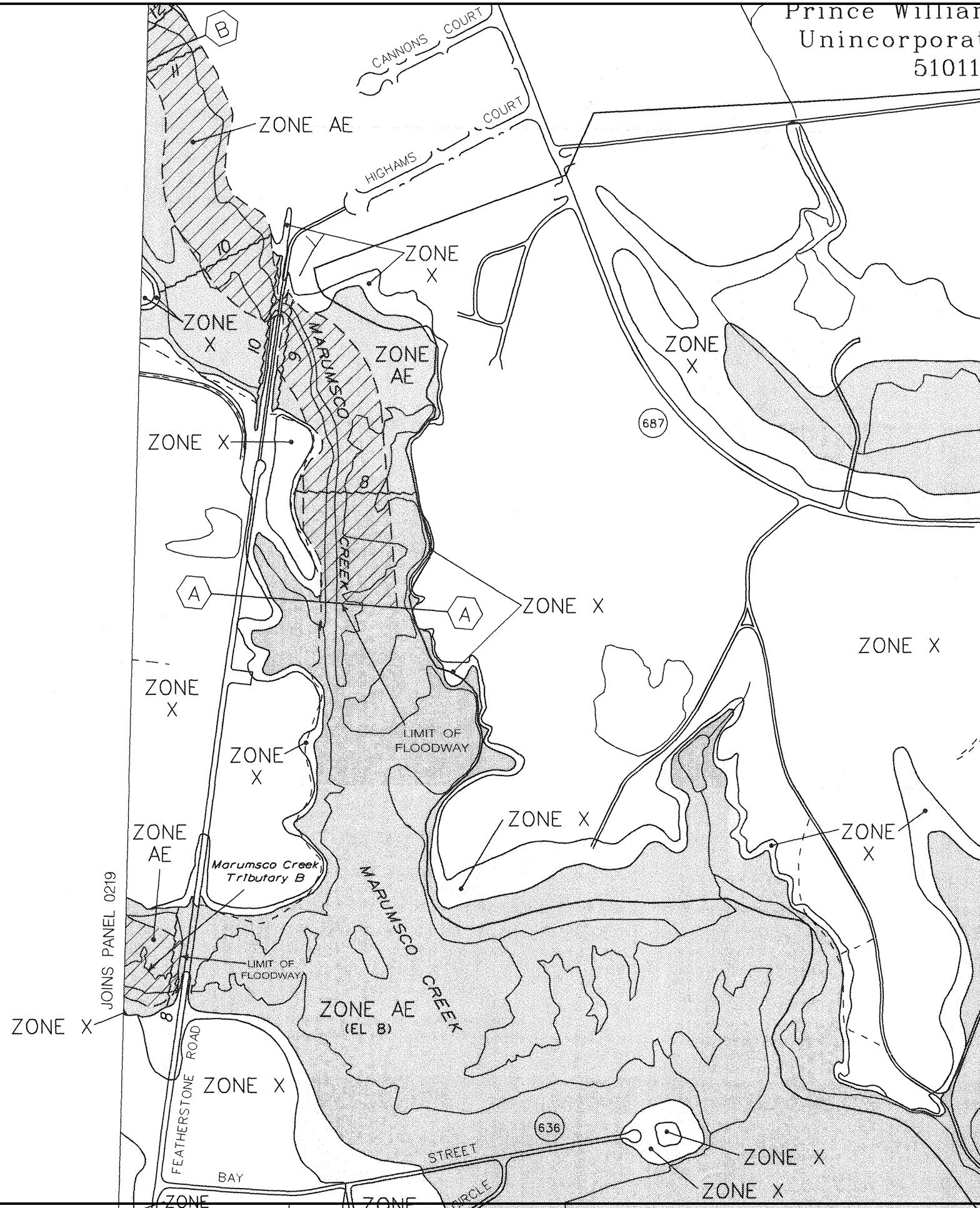
Federal Emergency Management Agency

This is an official copy of a portion of the above referenced flood map. It was extracted using F-MIT On-Line. This map does not reflect changes or amendments which may have been made subsequent to the date on the title block. For the latest product information about National Flood Insurance Program flood maps check the FEMA Flood Map Store at www.msc.fema.gov

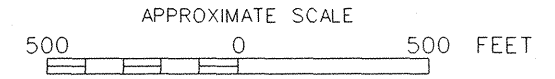
Coordinates shown on Transverse Mercator spheroid used in the map are in slight positional differences from the FIRM.

Coordinates to the National datum must be compared to the datum. For information on the Vertical Datum used, contact the

The Prince William County photogrammetric data complies with U.S. standards. The map represents the edge of projection; the map is inherent in the



Prince William
Unincorporated
510119



NATIONAL FLOOD INSURANCE PROGRAM

FIRM
FLOOD INSURANCE RATE MAP
**PRINCE WILLIAM COUNTY,
VIRGINIA
AND INCORPORATED AREAS**

PANEL 238 OF 330
(SEE MAP INDEX FOR PANELS NOT PRINTED)

CONTAINS:

COMMUNITY	NUMBER	PANEL	SUFFIX
UNINCORPORATED AREAS	510119	0238	D

Notice to User: The MAP NUMBER shown below should be used when placing map orders; the COMMUNITY NUMBER shown above should be used on insurance applications for the subject community.

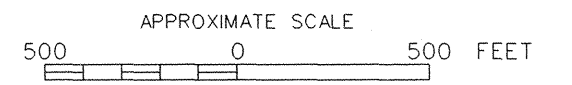
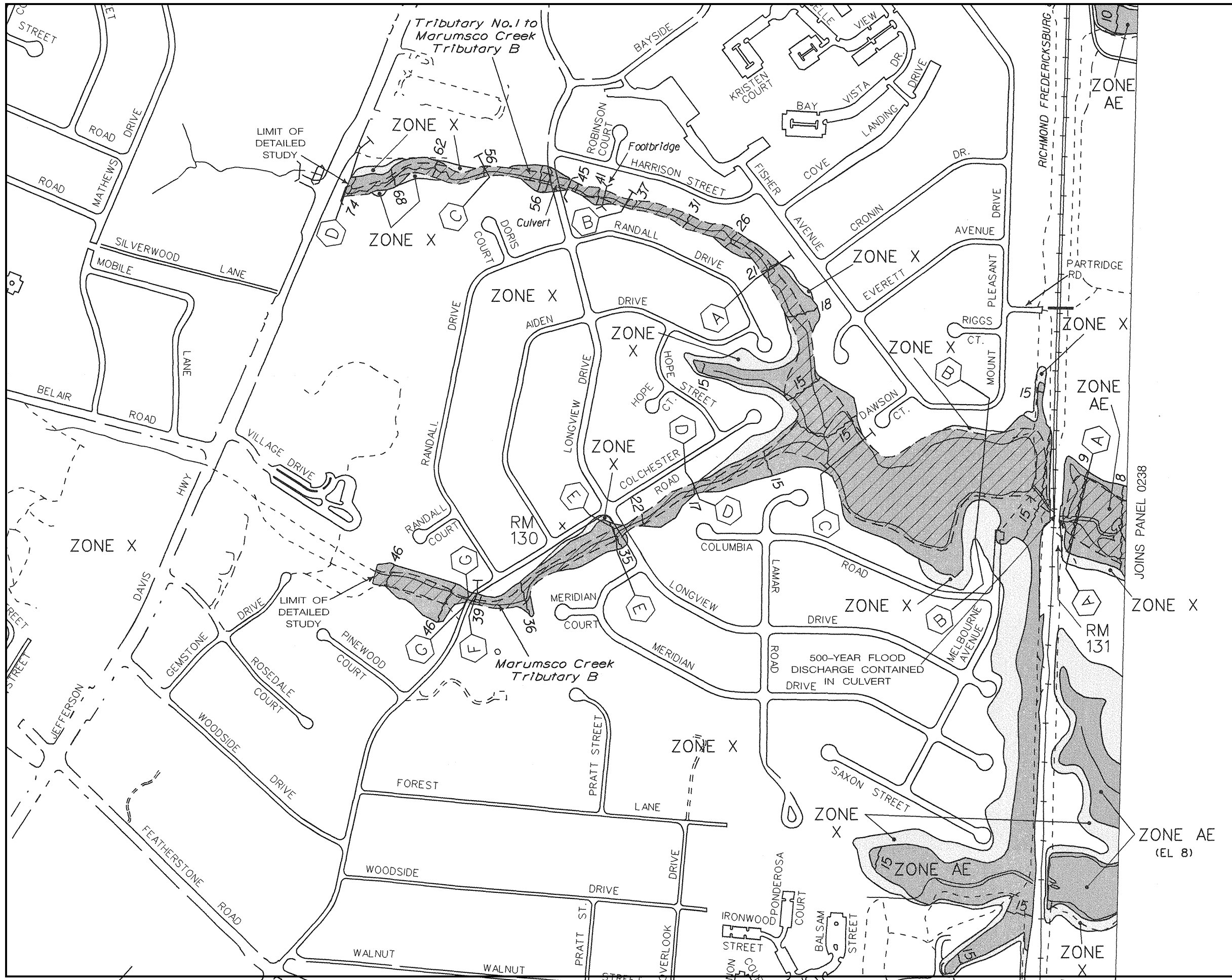
MAP NUMBER
51153C0238 D

EFFECTIVE DATE:
JANUARY 5, 1995



Federal Emergency Management Agency

This is an official copy of a portion of the above referenced flood map. It was extracted using F-MIT On-Line. This map does not reflect changes or amendments which may have been made subsequent to the date on the title block. For the latest product information about National Flood Insurance Program flood maps check the FEMA Flood Map Store at www.msc.fema.gov



NATIONAL FLOOD INSURANCE PROGRAM

FIRM
FLOOD INSURANCE RATE MAP
**PRINCE WILLIAM COUNTY,
VIRGINIA
AND INCORPORATED AREAS**

PANEL 219 OF 330
(SEE MAP INDEX FOR PANELS NOT PRINTED)

CONTAINS:

COMMUNITY	NUMBER	PANEL	SUFFIX
UNINCORPORATED AREAS	51019	0219	D

Notice to User: The MAP NUMBER shown below should be used when placing map orders; the COMMUNITY NUMBER shown above should be used on insurance applications for the subject community.

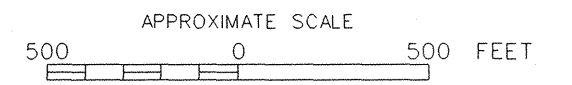
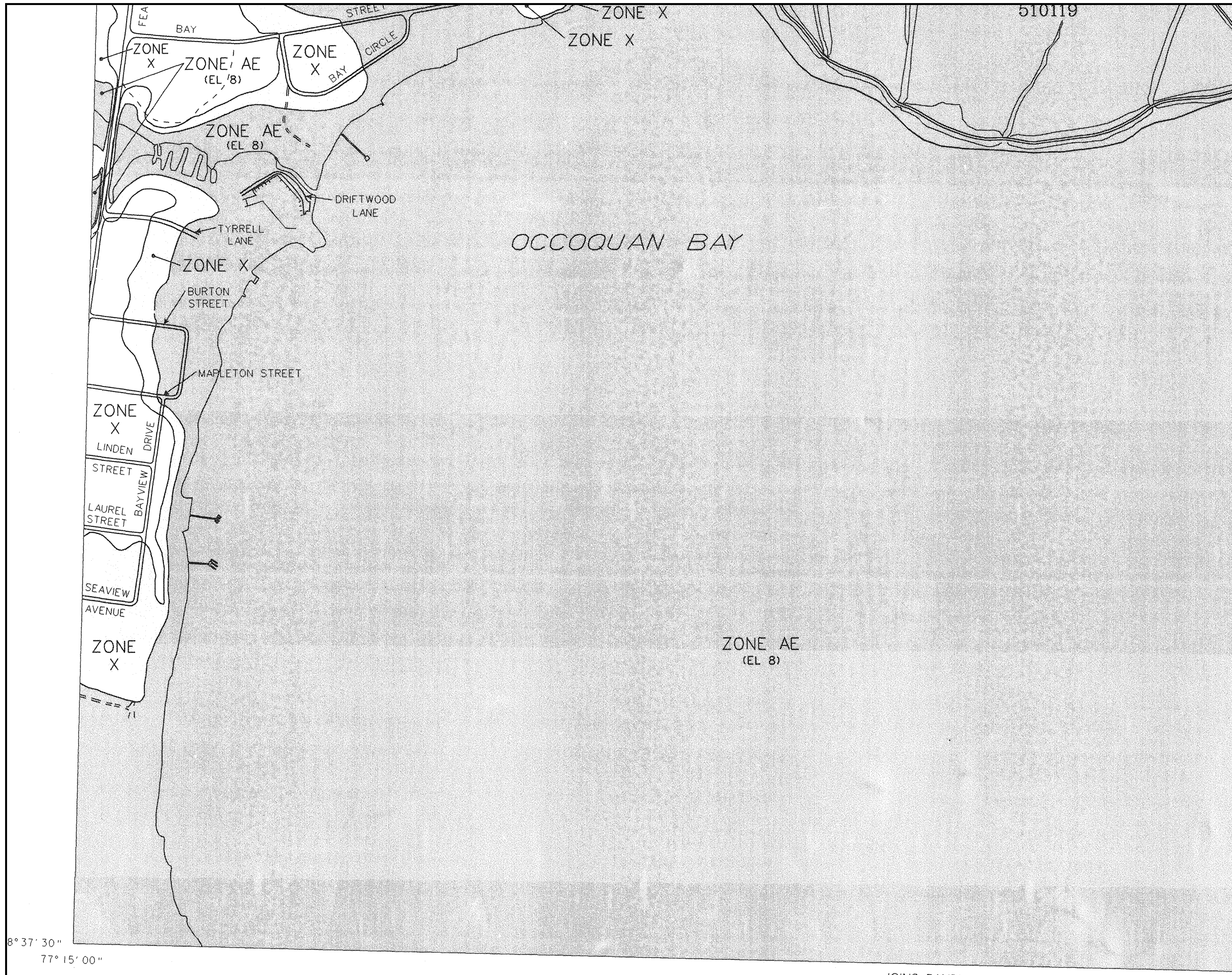
MAP NUMBER
51153C0219 D

EFFECTIVE DATE:
JANUARY 5, 1995



Federal Emergency Management Agency

This is an official copy of a portion of the above referenced flood map. It was extracted using F-MIT On-Line. This map does not reflect changes or amendments which may have been made subsequent to the date on the title block. For the latest product information about National Flood Insurance Program flood maps check the FEMA Flood Map Store at www.msc.fema.gov



NATIONAL FLOOD INSURANCE PROGRAM

FIRM
 FLOOD INSURANCE RATE MAP
**PRINCE WILLIAM COUNTY,
 VIRGINIA
 AND INCORPORATED AREAS**

PANEL 238 OF 330
 (SEE MAP INDEX FOR PANELS NOT PRINTED)

CONTAINS:

COMMUNITY	NUMBER	PANEL	SUFFIX
UNINCORPORATED AREAS	510119	0238	D

Notice to User: The MAP NUMBER shown below should be used when placing map orders; the COMMUNITY NUMBER shown above should be used on insurance applications for the subject community.

MAP NUMBER
 51153C0238 D

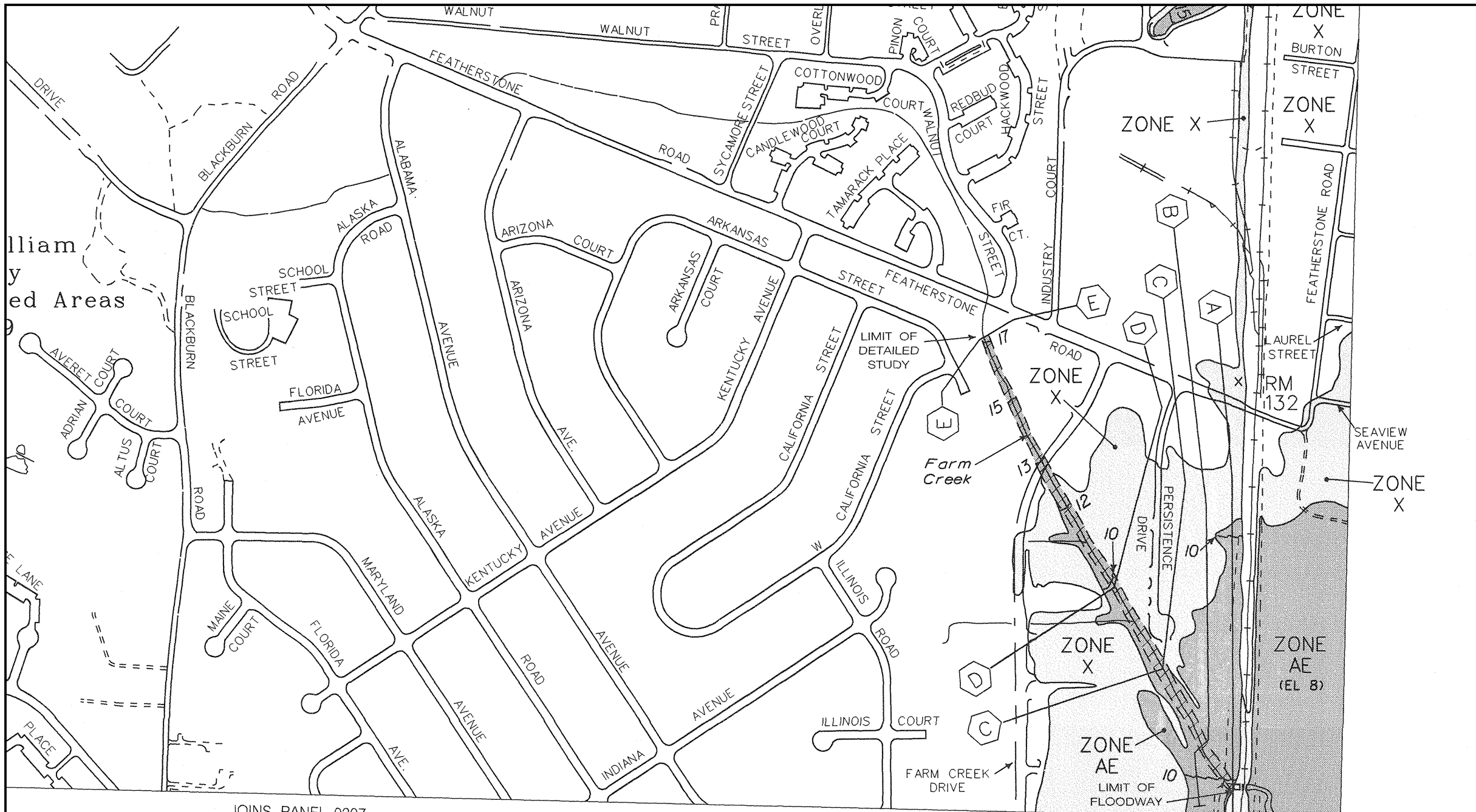
EFFECTIVE DATE:
 JANUARY 5, 1995



Federal Emergency Management Agency

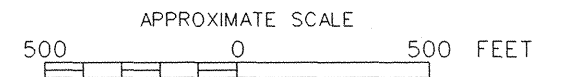
8° 37' 30"
 77° 15' 00"

This is an official copy of a portion of the above referenced flood map. It was extracted using F-MIT On-Line. This map does not reflect changes or amendments which may have been made subsequent to the date on the title block. For the latest product information about National Flood Insurance Program flood maps check the FEMA Flood Map Store at www.msc.fema.gov



JOINS PANEL 0307

38° 37' 30"
77° 15' 00"



NATIONAL FLOOD INSURANCE PROGRAM

FIRM
FLOOD INSURANCE RATE MAP
**PRINCE WILLIAM COUNTY,
VIRGINIA
AND INCORPORATED AREAS**

PANEL 219 OF 330
(SEE MAP INDEX FOR PANELS NOT PRINTED)

CONTAINS:

COMMUNITY	NUMBER	PANEL	SUFFIX
UNINCORPORATED AREAS	51019	0219	D

Notice to User: The MAP NUMBER shown below should be used when placing map orders; the COMMUNITY NUMBER shown above should be used on insurance applications for the subject community.

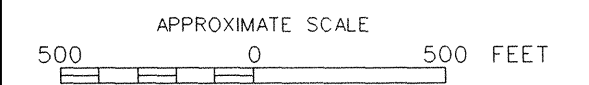
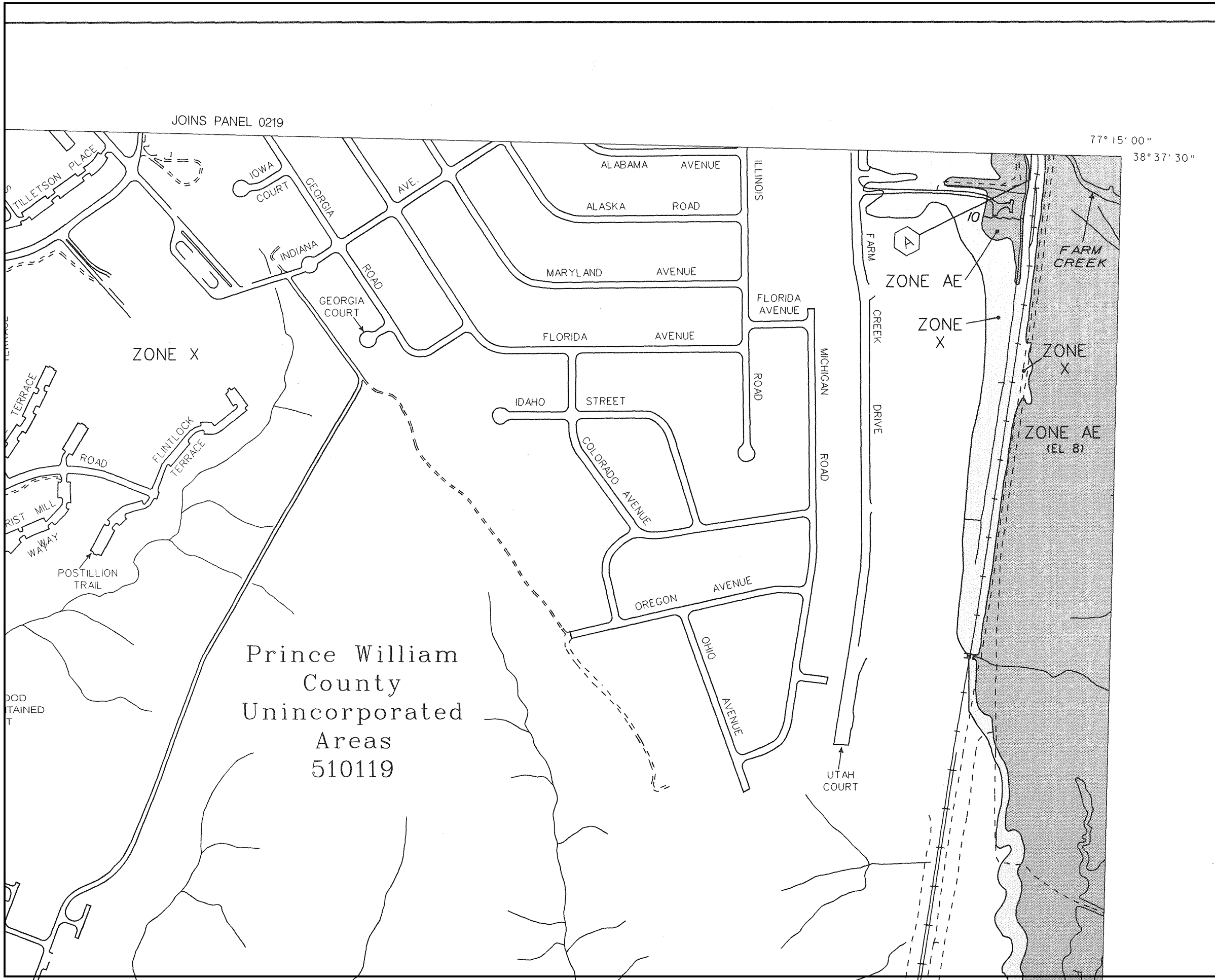
MAP NUMBER
51153C0219 D

EFFECTIVE DATE:
JANUARY 5, 1995



Federal Emergency Management Agency

This is an official copy of a portion of the above referenced flood map. It was extracted using F-MIT On-Line. This map does not reflect changes or amendments which may have been made subsequent to the date on the title block. For the latest product information about National Flood Insurance Program flood maps check the FEMA Flood Map Store at www.msc.fema.gov



NATIONAL FLOOD INSURANCE PROGRAM

FIRM
FLOOD INSURANCE RATE MAP
**PRINCE WILLIAM COUNTY,
VIRGINIA
AND INCORPORATED AREAS**

PANEL 307 OF 330
(SEE MAP INDEX FOR PANELS NOT PRINTED)


CONTAINS:

COMMUNITY	NUMBER	PANEL	SUFFIX
UNINCORPORATED AREAS	51019	0307	D

Notice to User: The MAP NUMBER shown below should be used when placing map orders; the COMMUNITY NUMBER shown above should be used on insurance applications for the subject community.

MAP NUMBER
51153C0307 D

EFFECTIVE DATE :
JANUARY 5, 1995



Federal Emergency Management Agency

This is an official copy of a portion of the above referenced flood map. It was extracted using F-MIT On-Line. This map does not reflect changes or amendments which may have been made subsequent to the date on the title block. For the latest product information about National Flood Insurance Program flood maps check the FEMA Flood Map Store at www.msc.fema.gov