



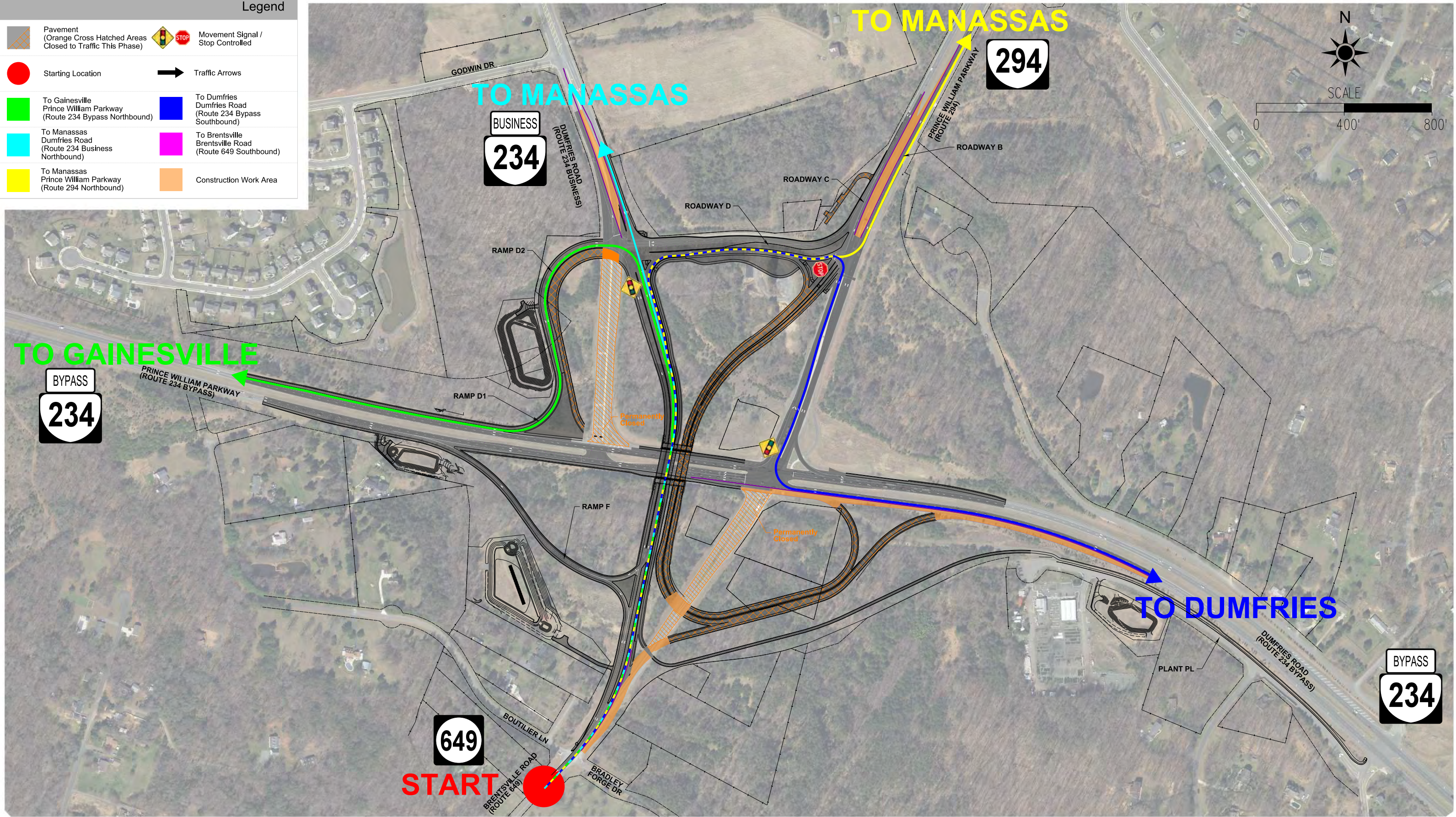
Route 234-Brentsville Road Interchange Project (1 of 6)

Construction Phase 2 - Interchange Destination Routing
From Brentsville - Heading Northbound on Brentsville Road (Route 649 NB)



Legend

- Pavement (Orange Cross Hatched Areas Closed to Traffic This Phase)
- Movement Signal / Stop Controlled
- Starting Location
- Traffic Arrows
- To Gainesville Prince William Parkway (Route 234 Bypass Northbound)
- To Dumfries Dumfries Road (Route 234 Bypass Southbound)
- To Manassas Dumfries Road (Route 234 Business Northbound)
- To Brentsville Brentsville Road (Route 649 Southbound)
- To Manassas Prince William Parkway (Route 294 Northbound)
- Construction Work Area





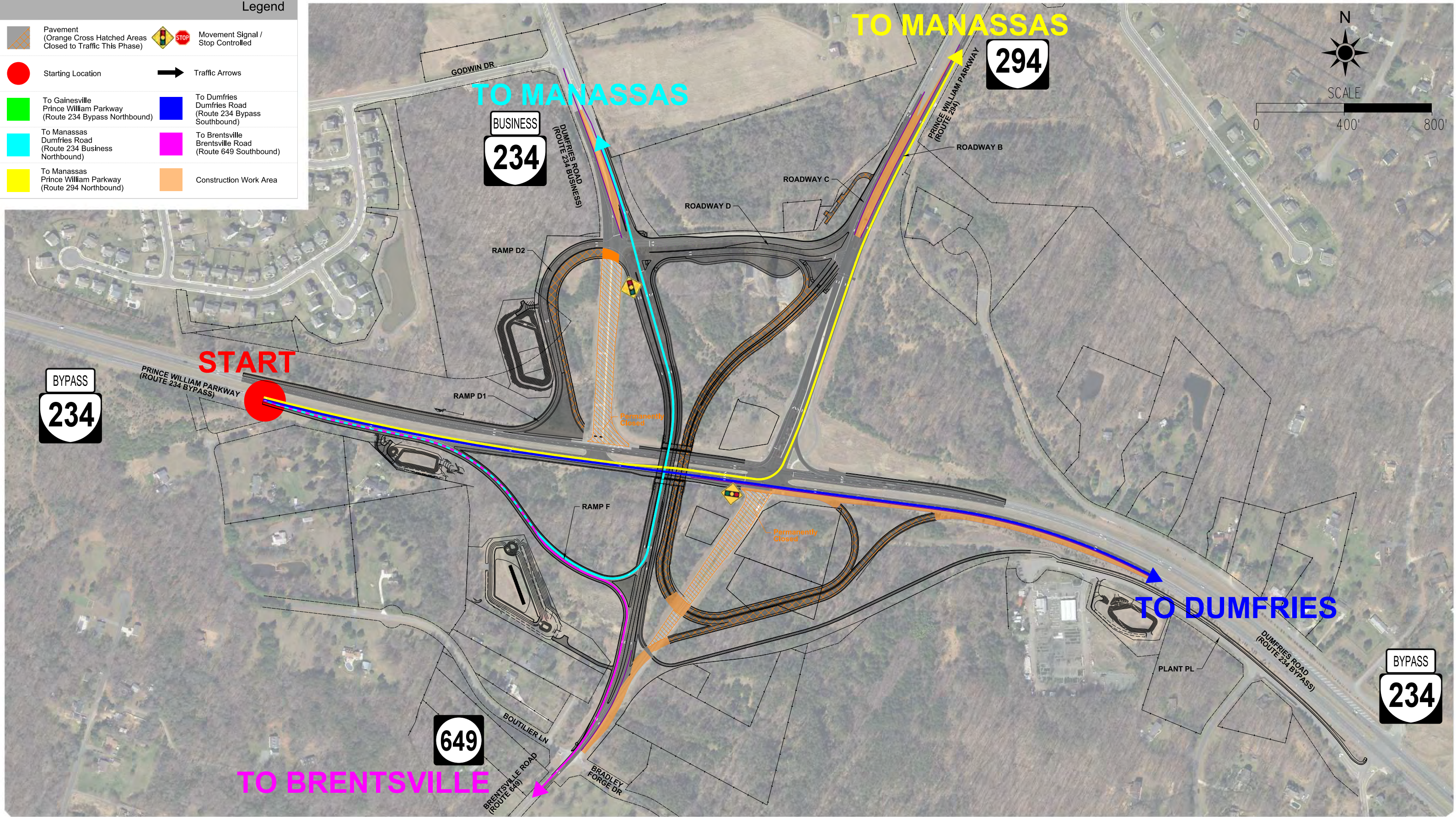
Route 234-Brentsville Road Interchange Project (2 of 6)

Construction Phase 2 - Interchange Destination Routing
From Gainesville- Heading Southbound on Prince William Parkway (Route 234 Bypass SB)



Legend

- Pavement (Orange Cross Hatched Areas Closed to Traffic This Phase)
- Movement Signal / Stop Controlled
- Starting Location
- Traffic Arrows
- To Gainesville Prince William Parkway (Route 234 Bypass Northbound)
- To Dumfries Dumfries Road (Route 234 Bypass Southbound)
- To Manassas Dumfries Road (Route 234 Business Northbound)
- To Brentsville Brentsville Road (Route 649 Southbound)
- To Manassas Prince William Parkway (Route 294 Northbound)
- Construction Work Area





Route 234-Brentsville Road Interchange Project

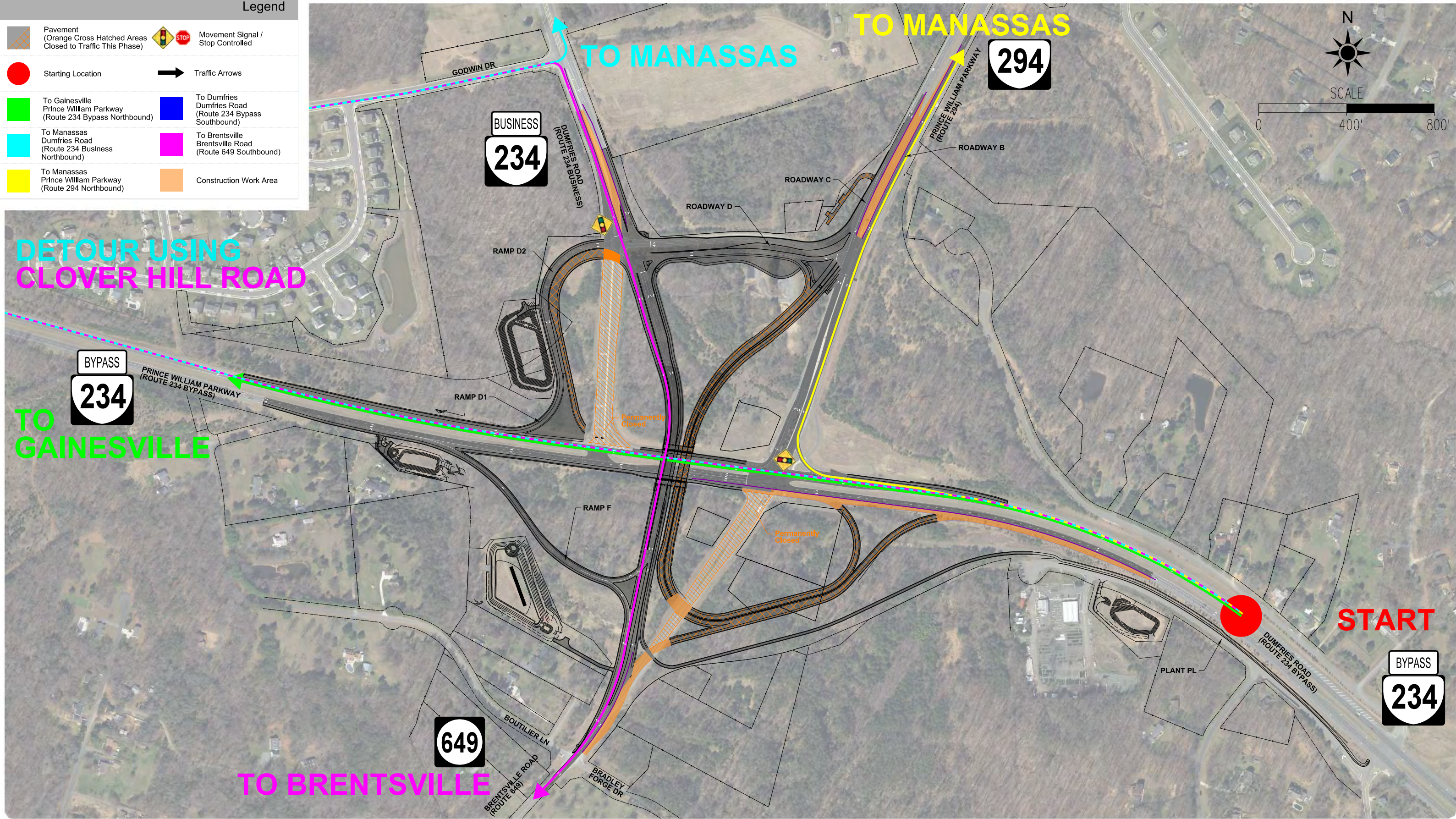
Construction Phase 2 - Interchange Destination Routing

From Dumfries - Heading Northbound on Dumfries Road (Route 234 Bypass NB)



Legend

- Pavement (Orange Cross Hatched Areas Closed to Traffic This Phase)
- Movement Signal / Stop Controlled
- Starting Location
- Traffic Arrows
- To Gainesville Prince William Parkway (Route 234 Bypass Northbound)
- To Dumfries Dumfries Road (Route 234 Bypass Southbound)
- To Manassas Dumfries Road (Route 234 Business Northbound)
- To Brentsville Brentsville Road (Route 649 Southbound)
- To Manassas Prince William Parkway (Route 294 Northbound)
- Construction Work Area





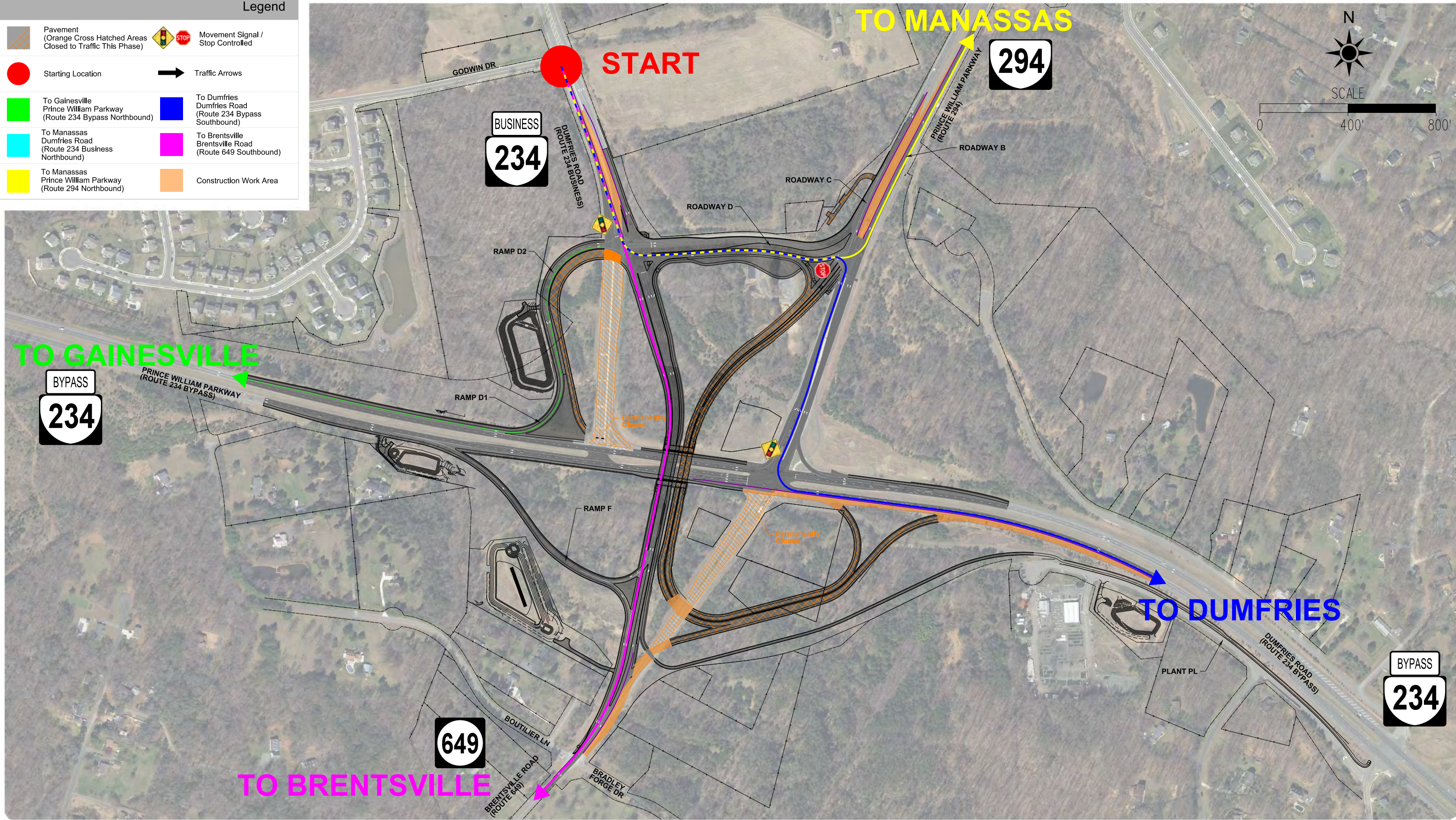
Route 234-Brentsville Road Interchange Project (4 of 6)

Construction Phase 2 - Interchange Destination Routing
From Manassas - Heading Southbound on Dumfries Road (Route 234 Business SB)



Legend

- Pavement (Orange Cross Hatched Areas Closed to Traffic This Phase)
- Movement Signal / Stop Controlled
- Starting Location
- Traffic Arrows
- To Gainesville Prince William Parkway (Route 234 Bypass Northbound)
- To Dumfries Dumfries Road (Route 234 Bypass Southbound)
- To Manassas Dumfries Road (Route 234 Business Northbound)
- To Brentsville Brentsville Road (Route 649 Southbound)
- To Manassas Prince William Parkway (Route 294 Northbound)
- Construction Work Area





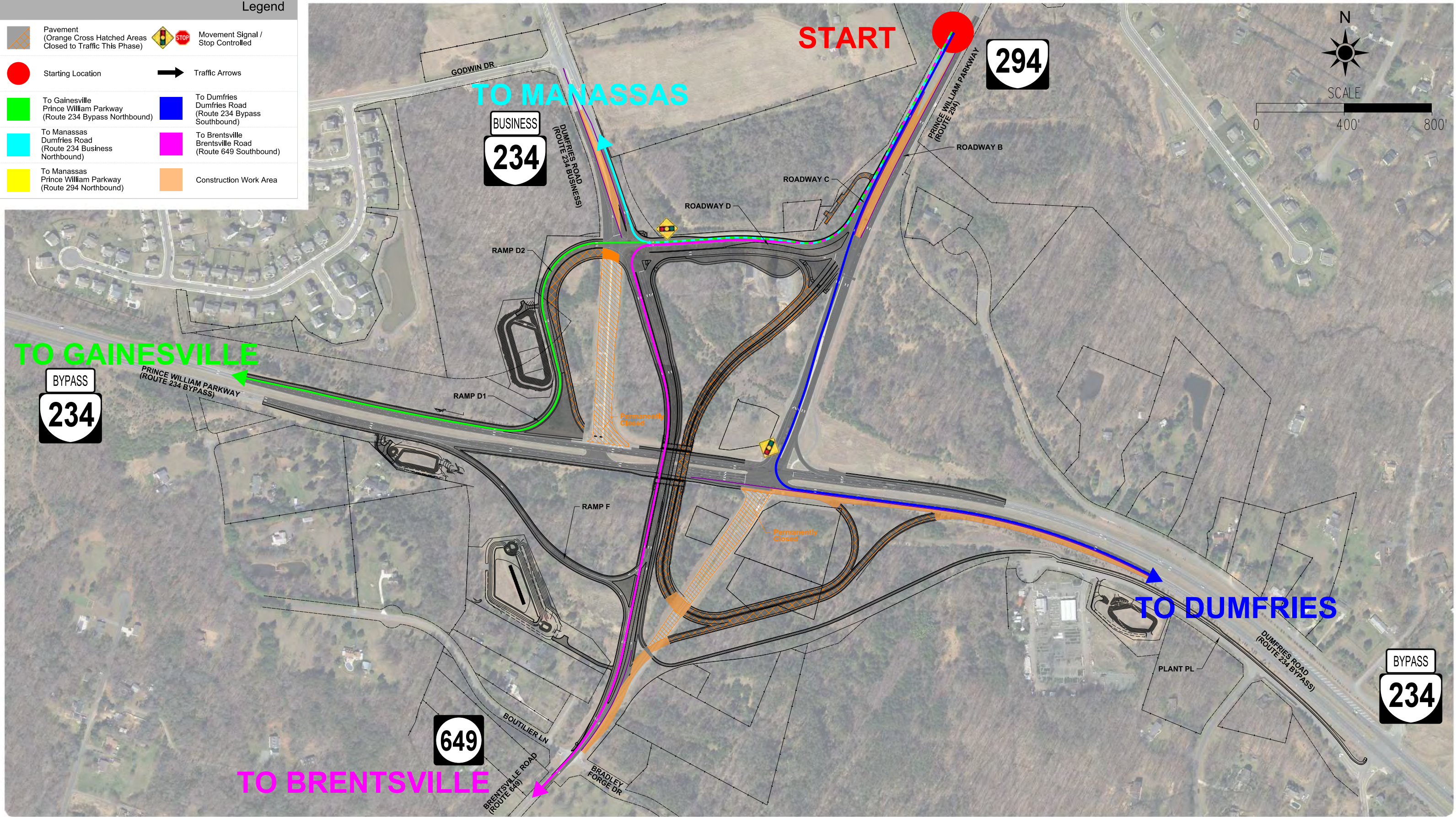
Route 234-Brentsville Road Interchange Project (5 of 6)

Construction Phase 2 - Interchange Destination Routing
From Manassas - Heading Southbound on Prince William Parkway (Route 294 SB)



Legend

- Pavement (Orange Cross Hatched Areas Closed to Traffic This Phase)
- Movement Signal / Stop Controlled
- Starting Location
- Traffic Arrows
- To Gainesville Prince William Parkway (Route 234 Bypass Northbound)
- To Dumfries Dumfries Road (Route 234 Bypass Southbound)
- To Manassas Dumfries Road (Route 234 Business Northbound)
- To Brentsville Brentsville Road (Route 649 Southbound)
- To Manassas Prince William Parkway (Route 294 Northbound)
- Construction Work Area











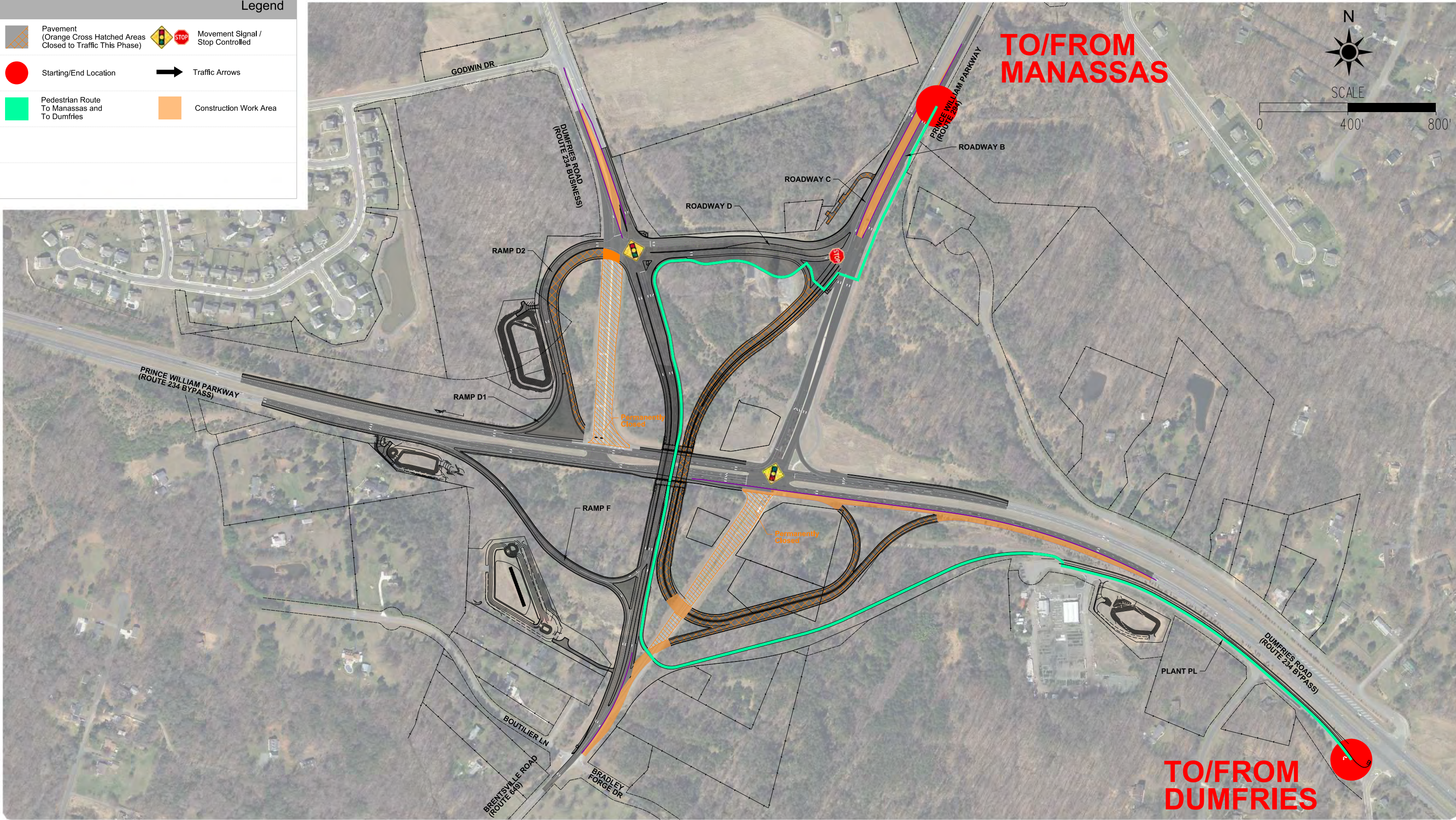
Route 234-Brentsville Road Interchange Project (6 of 6)

Construction Phase 2 - Interchange Destination Routing Shared Use Path Routing



Legend

-  Pavement
(Orange Cross Hatched Areas
Closed to Traffic This Phase)
-  Movement Signal /
Stop Controlled
-  Starting/End Location
-  Traffic Arrows
-  Pedestrian Route
To Manassas and
To Dumfries
-  Construction Work Area



PROJECT MANAGER PWC DOT: Macy, Ankers (703) 792-5276
SURVEYED BY, DATE Rinker Design Associates, P.C. (703) 386-7373, June, 2021
DESIGN BY Mark, Guon, P.E., Rinker Design Associates, P.C. (703) 386-7373
SUBSURFACE UTILITY BY, DATE AccuMark (804) 550-7740, April, 2021

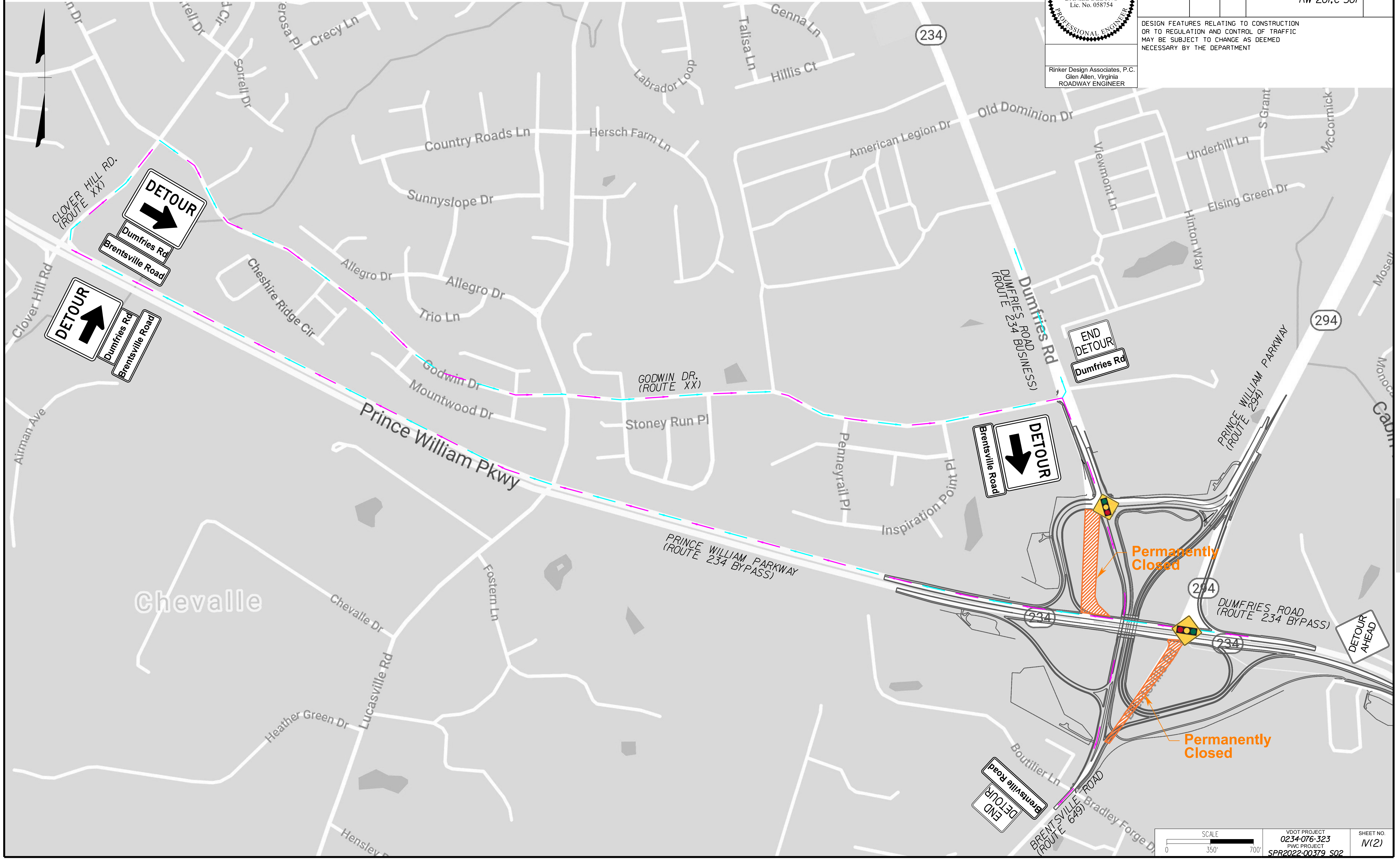
Phase 2 - Rte. 649 & Rte. 234 Bus. (Brentsville Rd. & Dumfries Rd.) Detour

DANIEL DELONG
Lic. No. 058754
PROFESSIONAL ENGINEER

Rinker Design Associates, P.C.
Glen Allen, Virginia
ROADWAY ENGINEER

REVISED	STATE	ROUTE	STATE	PROJECT	SHEET NO.
	VA.	234		0234-076-323 RW-201,C-501	M(2)

DESIGN FEATURES RELATING TO CONSTRUCTION OR TO REGULATION AND CONTROL OF TRAFFIC MAY BE SUBJECT TO CHANGE AS DEEMED NECESSARY BY THE DEPARTMENT



SCALE 0 350' 700'

VDOT PROJECT 0234-076-323
PWC PROJECT SPR2022-00379 S02

SHEET NO. M(2)